

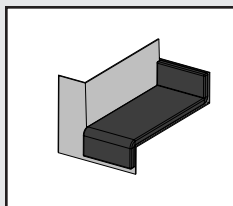
VersaPan® Standard Sill Pan Installation Instructions



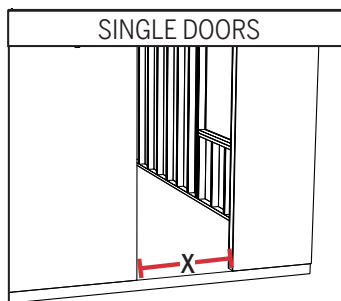
8817 West Market Street
Colfax, NC 27235 | 800.334.2006
www.enduraproducts.com

PLEASE NOTE:

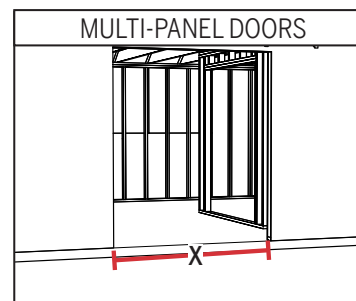
If a VersaPan End Cap (VPENDCAP4916 or VPENDCAP6916) is being used for installation, some steps will vary slightly. These steps will be highlighted in a gray box.



STEP 1: MEASURE THE ROUGH OPENING OF THE DOOR



For rough openings **less than 40"**, follow Single Door Sill Pan Installation **below**.

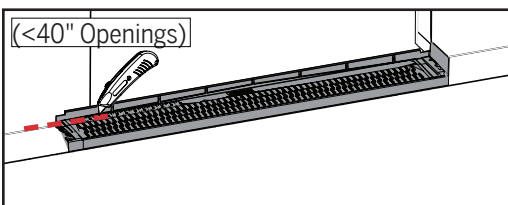


For rough openings **greater than 40"**, follow French Door Sill Pan Installation on **Page 3**.

a. Measure and note the length (X) of the rough opening of the door.

SINGLE DOOR SILL PAN INSTALLATION (ROUGH OPENINGS LESS THAN 40")

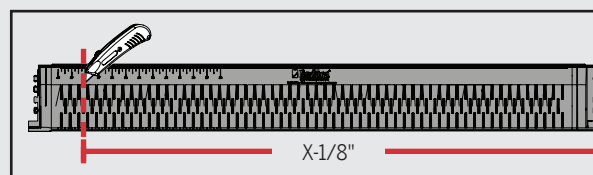
STEP 2: ALIGN THE SILL PAN INTO THE ROUGH OPENING AND SCORE PAN



- a. Align the wall of the pan against one side of the rough opening or the dovetails on the second pan with the dovetails of the first pan.
- b. Using your utility knife, make a score mark on the pan to determine where to make your cut.

WHEN USING END CAPS:

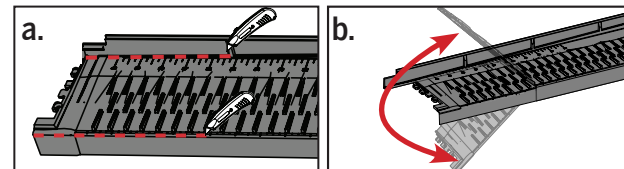
STEP 3: USING THE SCORE FROM STEP 2, MAKE A FLUSH CUT THROUGH THE SILL PAN



- a. Make a flush cut on the score mark made in the previous step. This should end up making the total length of the sill pan 1/8" less than the rough opening.

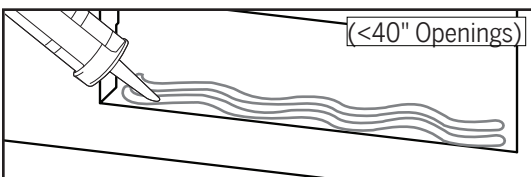
SKIP STEP 4 IF USING END CAP

STEP 4: USING THE SCORE FROM STEP 2, CUT THROUGH THE TOP AND BOTTOM FOLDS.



- a. Cut through the sill pan on the top fold. Make another cut on the bottom fold, even to the top fold.
- b. Once your cuts are made, prefold the side wall of the second pan and do a dry fit into the opening.

STEP 5: CAULK THE ROUGH OPENING



- a. Caulk the open subfloor in the rough opening.

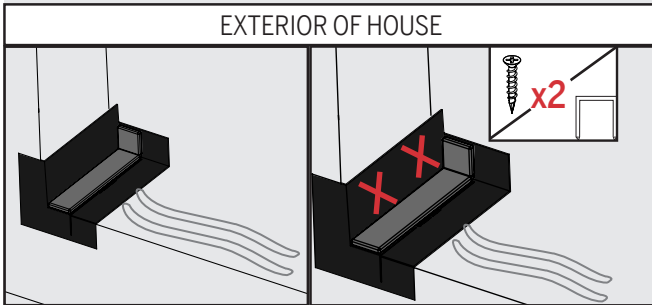
Innovation protected under patents and patents pending in U.S. and Canada. See www.EnduraPatents.com. Trademarks are property of their respective owners.

Rev. 05.06.2019

SINGLE DOOR SILL PAN INSTALLATION (ROUGH OPENINGS LESS THAN 40") - CONT.

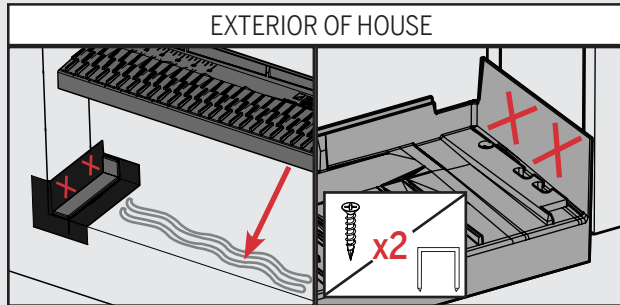
WHEN USING END CAPS:

STEP 6: PLACE AND SECURE THE END CAP TO THE STUD.



a. Position the end cap against the left-hand stud and fasten to the stud.

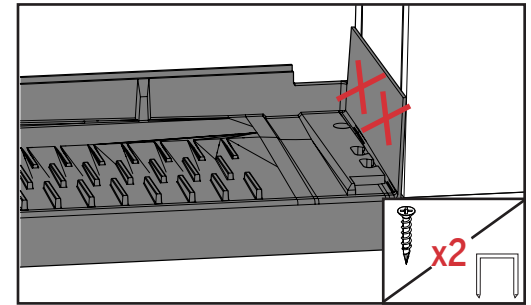
STEP 7: FASTEN THE SIDE WALL TO THE STUD, WITH THE PAN LAID ON TOP OF THE END CAP



a. Insert the sill pan into the opening, positioned on top of the end cap, against the right-hand stud. Use fasteners to secure the right side of the sill pan to the right-hand stud.

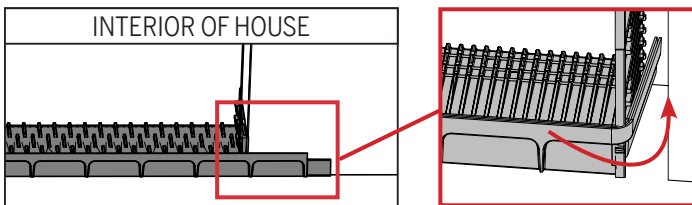
SKIP STEPS 8-10 IF USING END CAP

STEP 8: SECURE THE RIGHT HAND SIDE OF THE SILL PAN TO THE STUD.

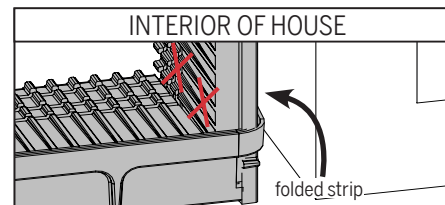


a. Fasten the side wall of the sill pan to the stud using two fasteners. Make sure the fasteners are placed above the back wall.

STEP 9: SECURE THE LEFT HAND SIDE OF THE ROUGH OPENING.

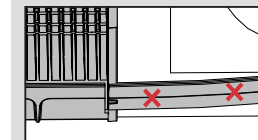


a. On the interior of the house, fold the excess strip of the back wall of the sill pan into the space between the sill pan and the stud.



b. Secure the folded strip of the back wall of the sill pan to the stud using the fasteners.

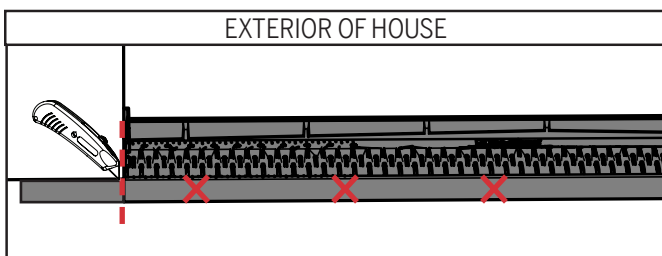
For tight spaces between the sill pan and stud:



Secure the excess strip of the back wall onto the stud.

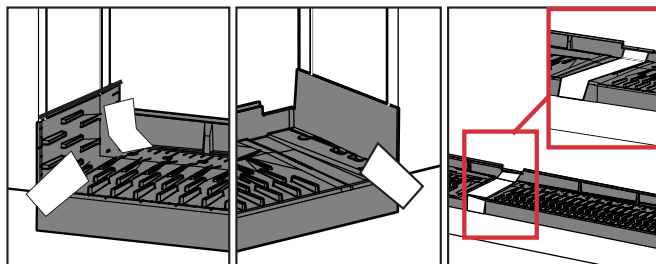
NOTE: You may have to remove part of the dry wall to access the stud.

STEP 10: CUT THE FRONT STRIP OFF THE SILL PAN



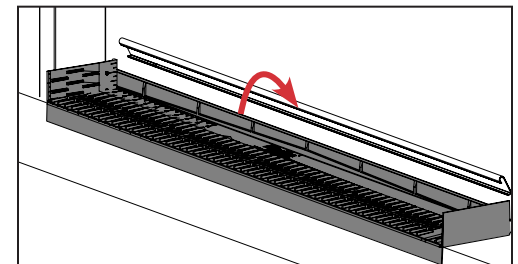
a. Use a utility knife to cut the strip of sill pan off the front left corner.

STEP 11: APPLY SEALING STRIPS TO THE AREAS SHOWN BELOW



a. Peel the backing off the sealing strips provided and apply to the location(s) indicated above.

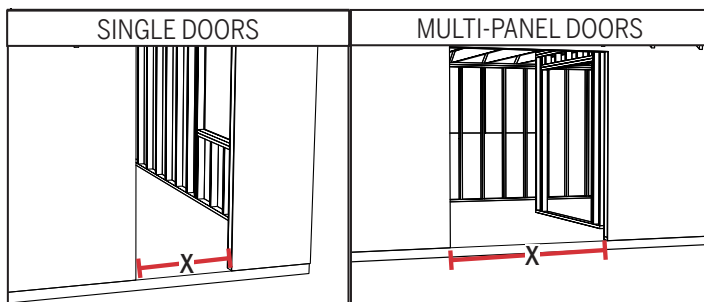
STEP 12: (OPTIONAL) INSTALL Z-SERIES NOSING



a. Cut the Z-Series Nosing to be 1" shorter than the overall width of the door system. Rotate the nosing over the back wall of the sill pan and secure.

MULTI-PANEL DOOR SILL PAN INSTALLATION (ROUGH OPENINGS GREATER THAN 40")

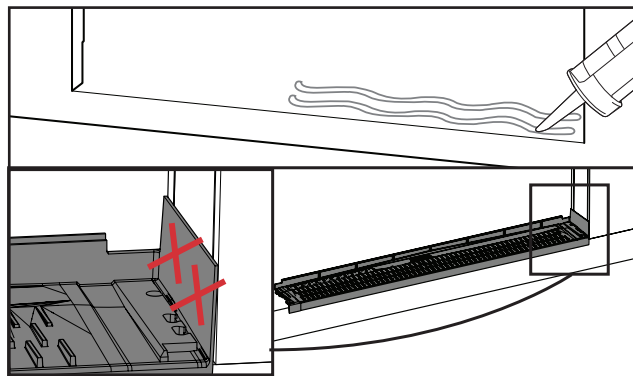
STEP 1: MEASURE THE ROUGH OPENING OF THE DOOR



For rough openings **less than 40"**, follow Single Door Sill Pan Installation on **PG. 1**. For rough openings **greater than 40"**, follow French Door Sill Pan Installation at right.

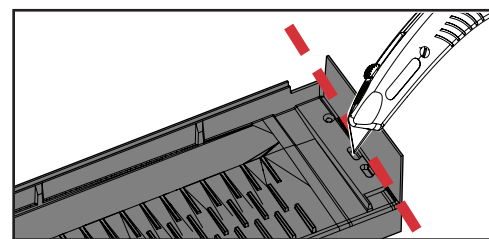
- a. Measure and note the length (X) of the rough opening of the door.

STEP 2: INSTALL THE FIRST PAN INTO THE ROUGH OPENING



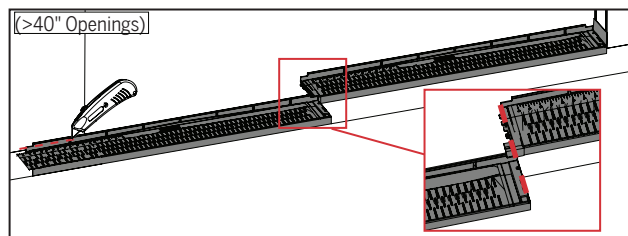
- a. Caulk the subfloor under where the first sill pan will be installed.
b. Install the first sill pan against the stud and add two fasteners into the side wall.

STEP 3: PREP THE SECOND PAN FOR INSTALL



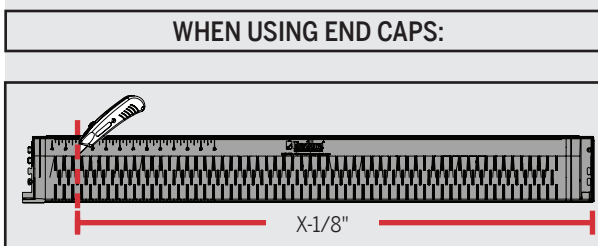
- a. Cut the right hand wall of the second sill pan, allowing access to the dovetails.

STEP 4: ALIGN THE SILL PAN INTO THE ROUGH OPENING AND SCORE PAN



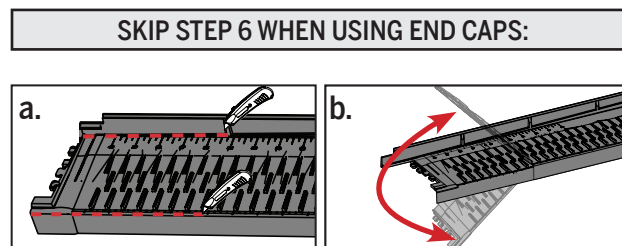
- a. Align the wall of the pan against one side of the rough opening or the dovetails on the second pan with the dovetails of the first pan.
b. Using your utility knife, make a score mark on the pan to determine where to make your cut.

STEP 5: USING THE SCORE FROM STEP 4, MAKE A FLUSH CUT THROUGH THE SILL PAN



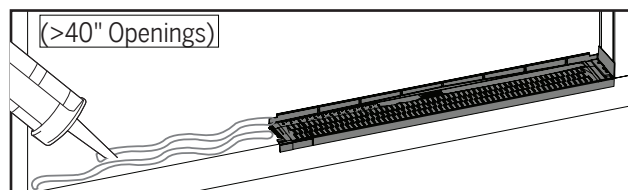
- a. Make a flush cut on the score mark made in the previous step. This should end up making the total length of the sill pan 1/8" less than the rough opening.

STEP 6: USING THE SCORE FROM STEP 4, CUT THROUGH THE TOP AND BOTTOM FOLDS.



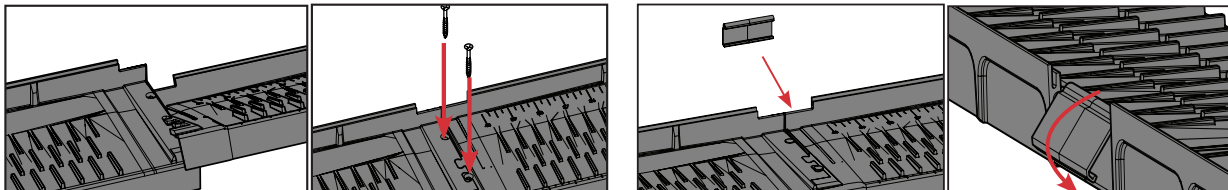
- a. Cut through the sill pan on the top fold. Make another cut on the bottom fold, even to the top fold.
b. Once your cuts are made, prefold the side wall of the second pan and do a dry fit into the opening.

STEP 7: CAULK THE ROUGH OPENING



- a. Caulk the open subfloor in the rough opening.

STEP 8: CONNECT AND SECURE THE DOVETAILS



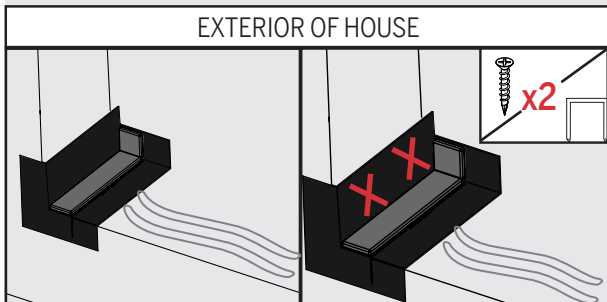
- a. Connect the dovetails and insert two screws into the countersunk holes in the sill pan. For concrete slabs, use concrete screw anchors.

- b. Secure the two pans together by attaching the included clip onto the back wall of the sill pan.

MULTI-PANEL DOOR SILL PAN INSTALLATION (ROUGH OPENINGS GREATER THAN 40") - CONT.

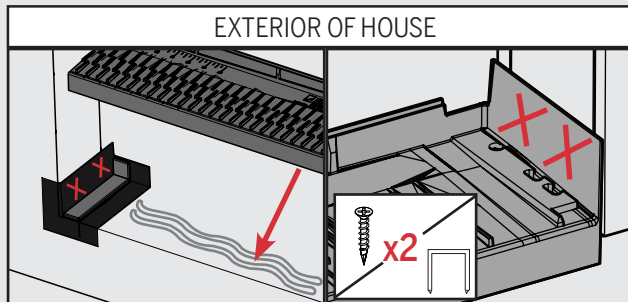
WHEN USING END CAPS:

STEP 9: PLACE AND SECURE THE END CAP TO THE STUD.



a. Position the end cap against the left-hand stud and fasten to the stud.

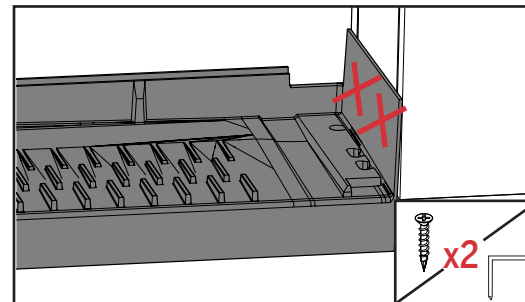
STEP 10: FASTEN THE SIDE WALL TO THE STUD, WITH THE PAN LAID ON TOP OF THE END CAP



a. Insert the sill pan into the opening, positioned on top of the end cap, against the right-hand stud. Use fasteners to secure the right side of the sill pan to the right-hand stud.

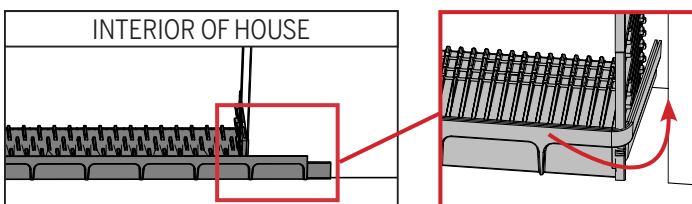
SKIP STEPS 11-13 IF USING END CAP

STEP 11: SECURE THE RIGHT HAND SIDE OF THE SILL PAN TO THE STUD.

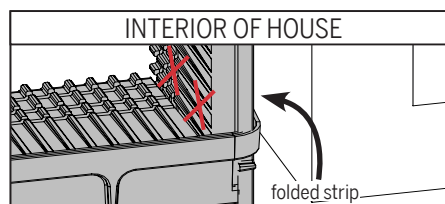


a. Fasten the side wall of the sill pan to the stud using two fasteners. Make sure the fasteners are placed above the back wall.

STEP 12: SECURE THE LEFT HAND SIDE OF THE ROUGH OPENING.

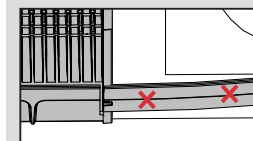


a. On the interior of the house, fold the excess strip of the back wall of the sill pan into the space between the sill pan and the stud.



b. Secure the folded strip of the back wall of the sill pan to the stud using the fasteners.

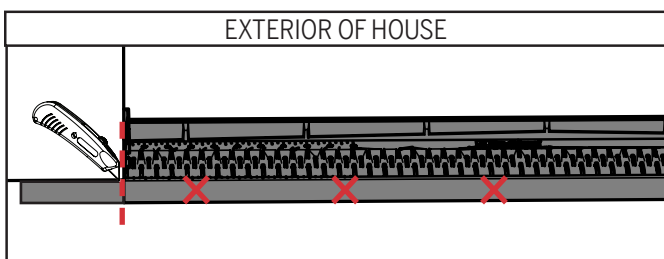
For tight spaces between the sill pan and stud:



Secure the excess strip of the back wall onto the stud.

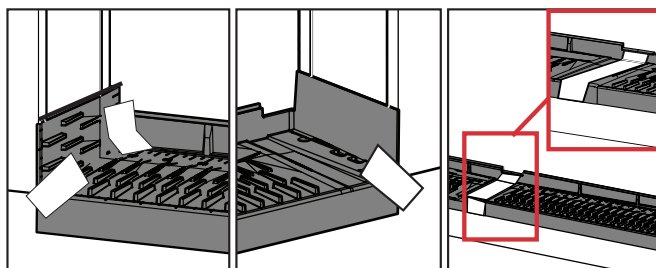
NOTE: You may have to remove part of the dry wall to access the stud.

STEP 13: CUT THE FRONT STRIP OFF THE SILL PAN



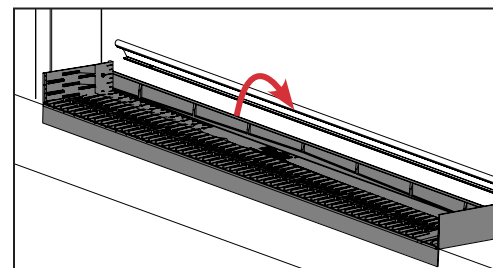
a. Use a utility knife to cut the strip of sill pan off the front left corner.

STEP 14: APPLY SEALING STRIPS TO THE AREAS SHOWN BELOW



a. Peel the backing off the sealing strips provided and apply to the location(s) indicated above.

STEP 15: (OPTIONAL) INSTALL Z-SERIES NOSING



a. Cut the Z-Series Nosing to be 1" shorter than the overall width of the door system. Rotate the nosing over the back wall of the sill pan and secure.