

# ADA Mull Boot

## Assembly Instructions



8817 West Market Street  
Colfax, NC 27235 | 800.334.2006  
www.enduraproducts.com

### Tools Required:

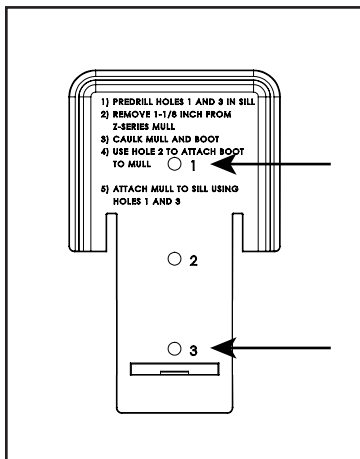
- Drill with 1/8" bit
- Miter Saw
- Caulk

### Screw Pack Includes:

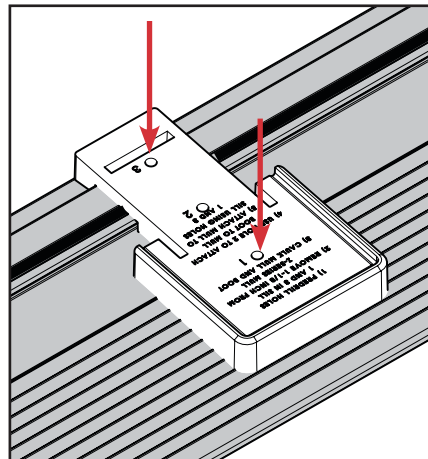
- (1) 1-5/8" screw
- (2) 3" screws

**Note:** Instructions apply for Inswing and Outswing Mull Boots. Inswing Application shown in images below

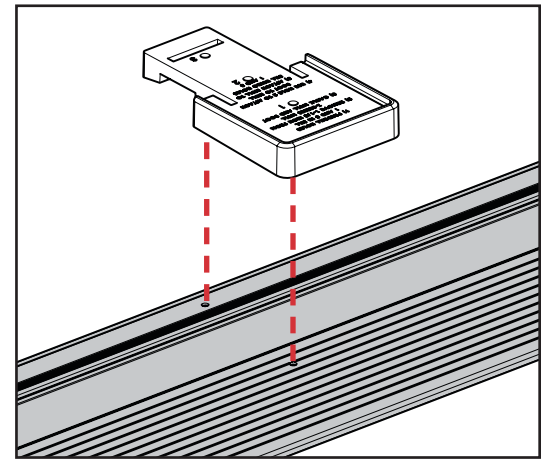
## STEP 1: PREDRILL HOLES INTO SILL DECK



a. Locate holes #1 and #3 (labeled on the mull boot).

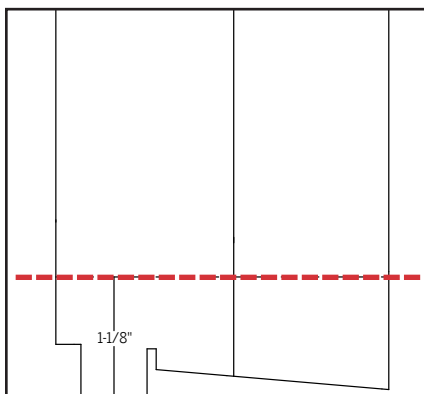


b. Place the mull boot on the sill deck to align the holes.

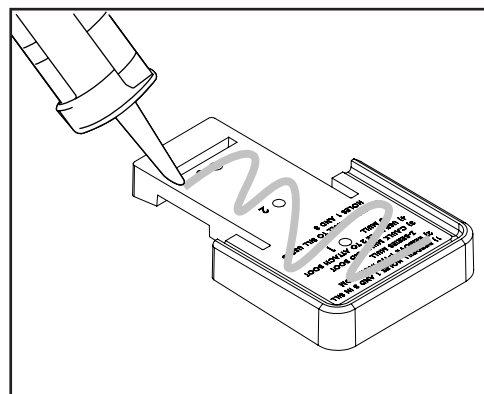


c. Drill into the #1 and #3 holes, through the sill.

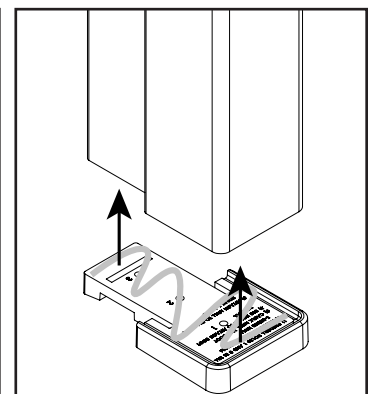
## STEP 2: PREPARE AND ATTACH THE MULL TO THE MULL BOOT



a. Cut off 1-1/8" from the bottom of a Z-Series Inswing Mull. Make sure to measure from the bottom of the lug (portion of the mull that fits into the cap channel).

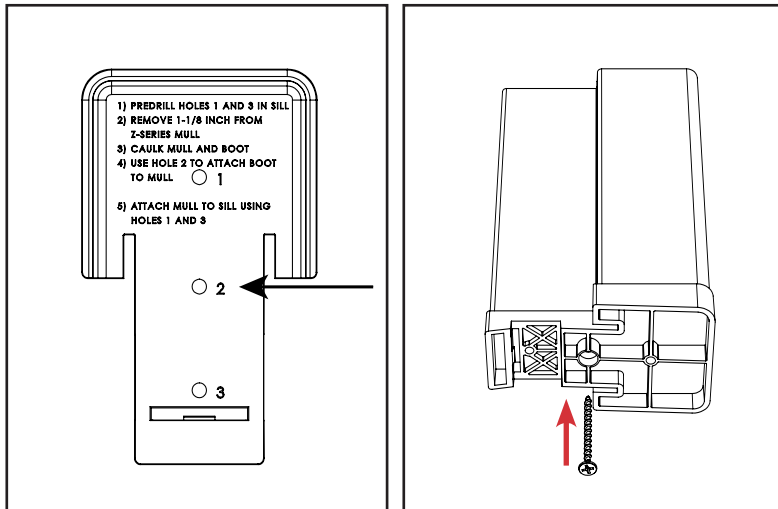


b. Apply caulk to the top of the mull boot (where the instructions are printed) and press onto the bottom of the mull.

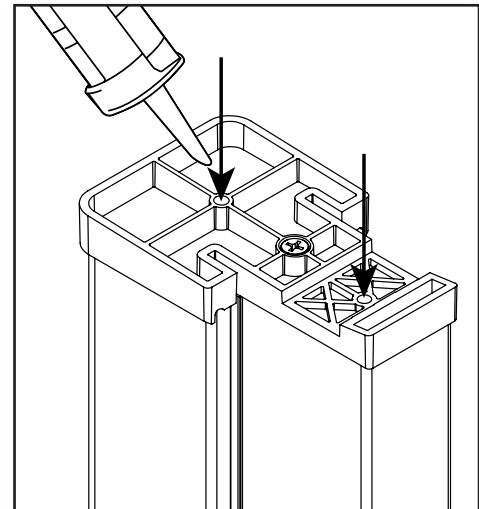


Rev. Date: 08.31.2017  
©2017 Endura Products, Inc.  
U.S. Patents Pending  
P/N 211158-ADAMULLBOOT

## STEP 2 (CONT.): PREPARE AND ATTACH THE MULL TO THE MULL BOOT

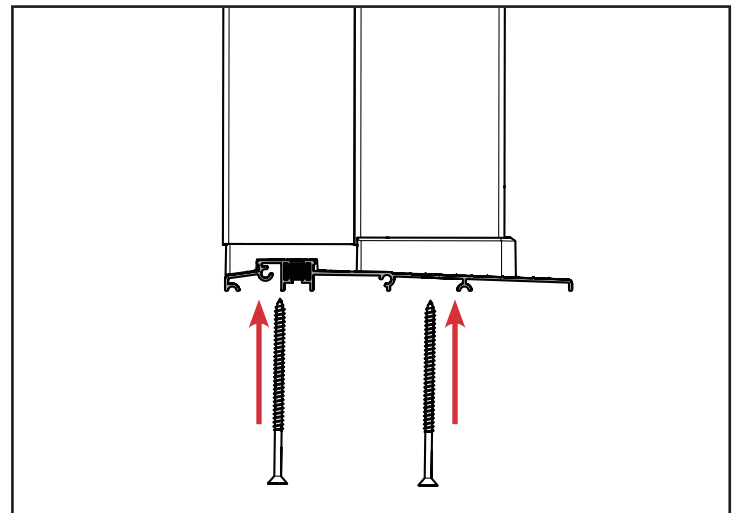
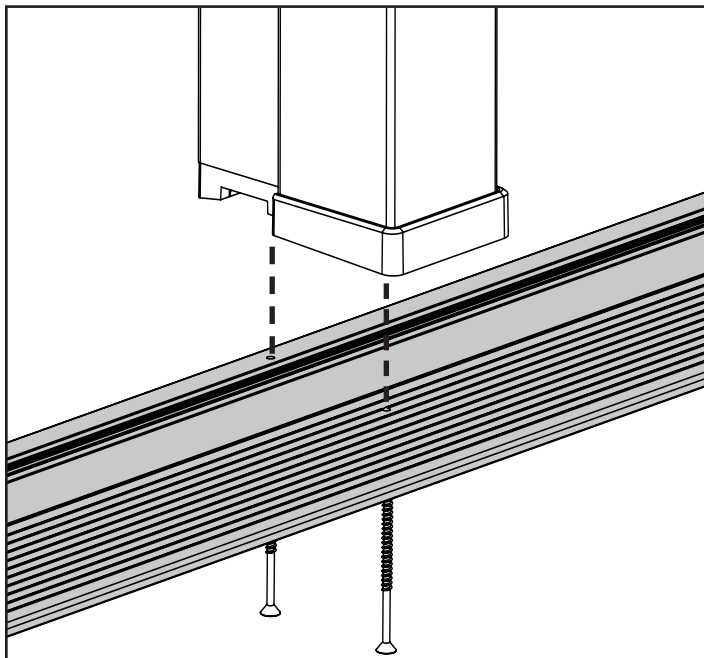


c. Attach the mull boot to the mull by fastening a **1-5/8"** screw through hole #2.



d. Completely fill holes #1 and #3 with caulk.

## STEP 3: ATTACH THE MULL TO THE SILL



a. Attach the mull to the sill by fastening two **3"** screws through predrilled holes #1 and #3 (from Step 1).