

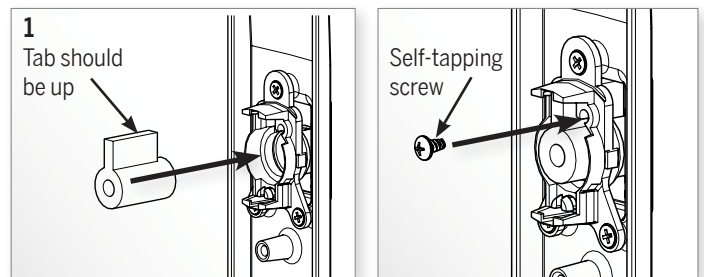
Trilennium® Hardware Cartridge Entry Set Installation Instructions for Dummy and Thumbturn French Door Lever Sets.

Check contents and identify all parts before proceeding

Interior Escutcheon:	(1) Individually Packed	Dummy Plug Pack:	(1) Dummy Plug
Exterior Escutcheon:	(1) Individually Packed		(2) #10-32 Mounting Screws
	(1) Escutcheon Gasket		(1) #8 x 3/8" Self Tapping Screw
Handle Pack:	(2) Lever Handles		(1) Actuator Bar (<i>only used with Thumbturn Function</i>)
Cartridge Pack:	(2) Dummy Handle Return Cartridge		
	(1) 9/64" Allen Wrench		
	(2) #10-32 Allen Screws for Handles		
	(4) #6-32 x 1/4" Phillips Head Cartridge Mounting Screws		

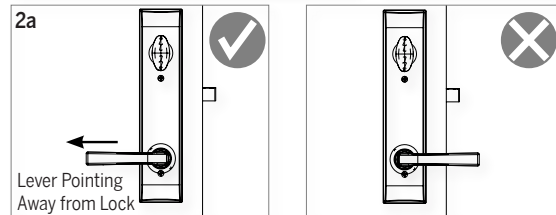
1. PREPARE EXTERIOR ESCUTCHEON

- Insert the dummy plug into upper hole from back side of escutcheon plate with tab pointing up. Orient as shown.
- Secure the dummy plug with #8 x 3/8" self-tapping screw.



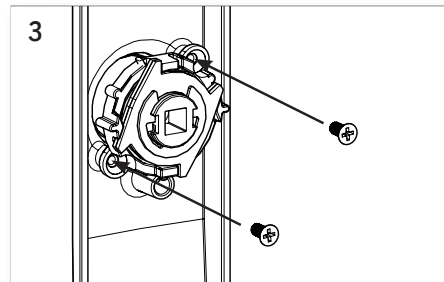
2. DETERMINE THE PROPER HANDING OF YOUR HANDSETS

- Identify the handset lever handing on each side of the panel.



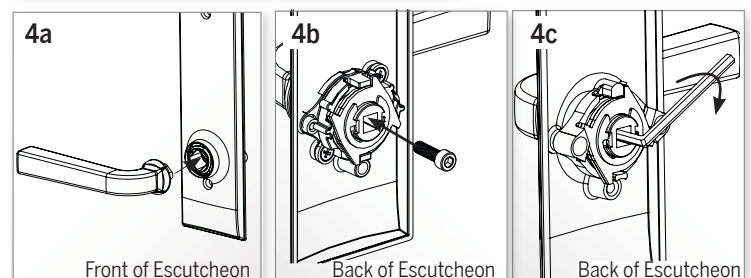
3. ATTACH THE CARTRIDGE TO THE ESCUTCHEON

- Insert a dummy cartridge into the lower hole on the back of the escutcheon and secure with the two #6-32 x 1/4" Phillips Head Cartridge Mounting Screws on each escutcheon.



4. ATTACH LEVERS TO ESCUTCHEONS

- Insert handle into square recess on the front of the escutcheon and hold in place.
- Insert the Handle Mounting Screw into the center of the cartridge from the back of the escutcheon and hand tighten with the Allen Wrench provided.
- Ensure that the lever is fully tightened.



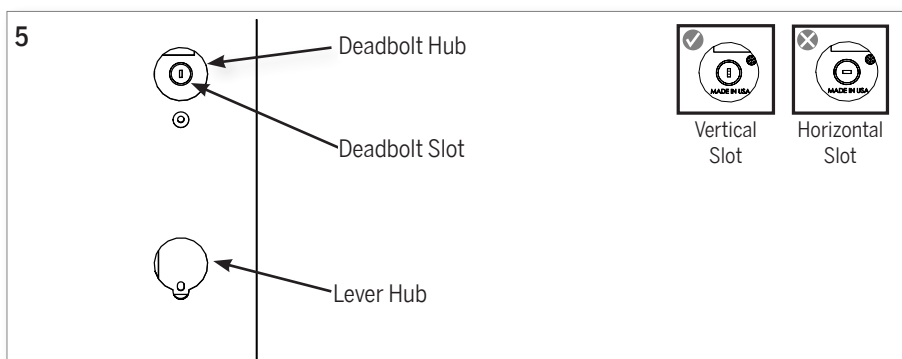
TRILENNIUM®

MULTI-POINT LOCKING SYSTEMS



5. CHECK HARDWARE IN DOOR FOR ALIGNMENT OF HUBS [THUMBTURN FUNCTION ONLY]

- With the door open, identify the two crossbore holes as the deadbolt hub (upper crossbore) and the lever hub (bottom crossbore).
- Check the following and adjust if necessary:
 - » Deadbolt slot must be vertical.



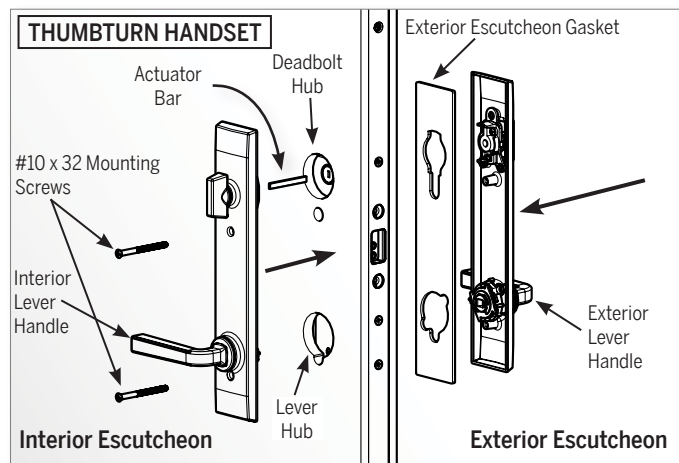
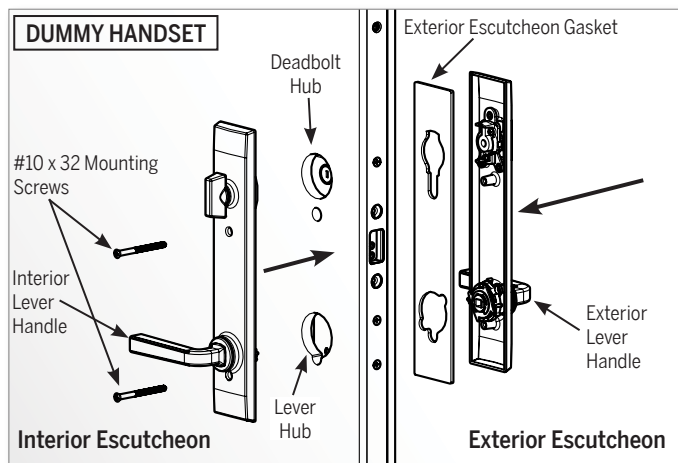
6. POSITION ESCUTCHEONS TO DOOR PANEL

DUMMY HANDSET

- Exterior first: Place Escutcheon Gasket over inside face of escutcheon. Align the lever cartridge into the lower crossbore, and hold it against the door panel.
- Interior next: Align the lever cartridge into the lower crossbore and against the door panel.
- Secure with (2) #10-32 mounting screws from interior to exterior. Hand-tighten snug, **DO NOT OVERTIGHTEN**.

THUMBTURN HANDSET

- Exterior first: Place Escutcheon Gasket over inside face of escutcheon. Align the lever cartridge into the lower crossbore, and hold it against the door panel.
- Interior next: Insert the Actuator Bar into the deadbolt slot. Align the lever cartridge into the lower crossbore hole and the thumbturn into the actuator bar and then hold the escutcheon against the door panel.
- Secure with (2) #10-32 mounting screws from interior to exterior. Hand-tighten snug, **DO NOT OVERTIGHTEN**.



8. CHECK OPERATION - THUMBTURN FUNCTION ONLY

Follow the below steps without closing the door, then test the steps again with the door closed.

- Turn thumbturn 90° to check that the upper and lower shoot bolt extend.
- Rotate the thumbturn downward to disengage bolts and open door.

