

Adjustable Sill Cap

Replacement Instructions



8817 West Market Street
Colfax, NC 27235 | 800.334.2006
www.enduraproducts.com

Tools/Materials Required:

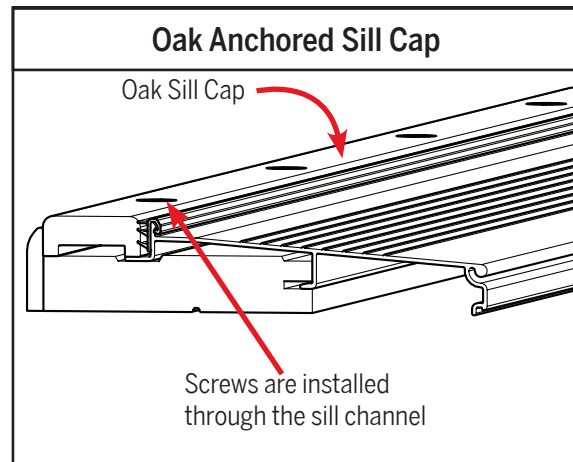
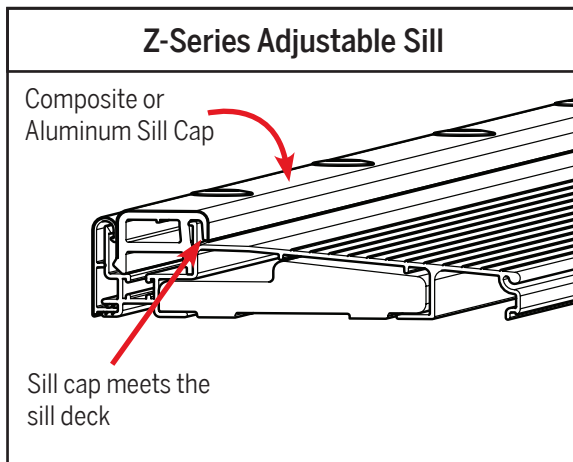
- Flathead Screwdriver
- Thin Wooden Board or Cloth
- Phillips Screwdriver
- Measuring Tape
- Cutting Tool

- Caulk
- Simple Solution® Corner Pads (2)

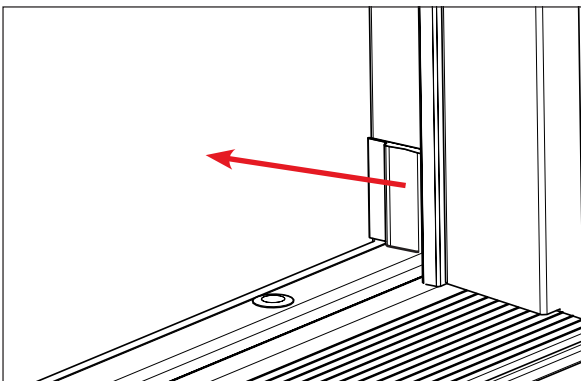
For French Doors:

- Pencil
- Drill
- 5/8" Diameter Drill Bit
- Rubber Mallet

Product Reference Guide



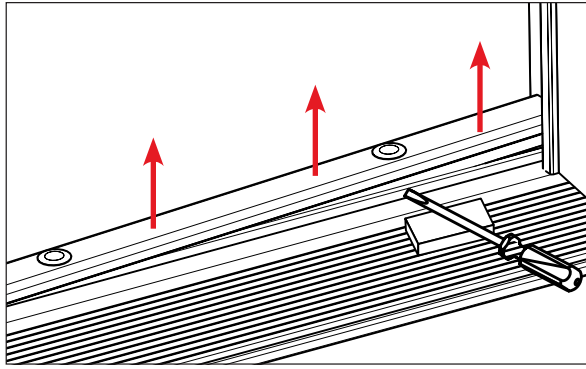
STEP 1: REMOVE CORNER PADS FROM AREA




a. Remove the corner pads from each jamb.

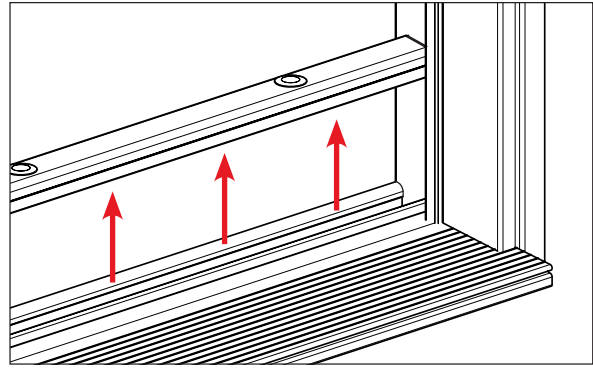
STEP 2: REMOVE OLD SILL CAP

For Z-Series Adjustable Sill Caps:



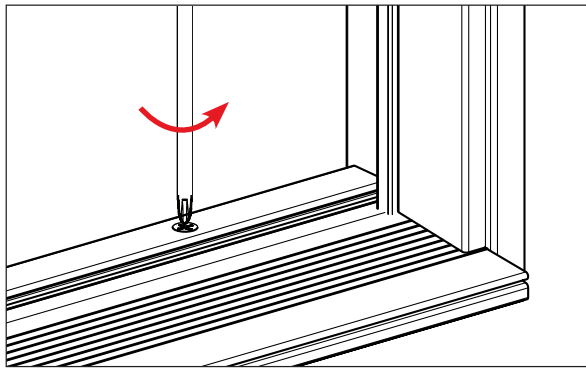
a. Pull up on the old sill cap using a flathead screwdriver to loosen it from the sill.

 Use a thin board or cloth to protect sill deck from damage.

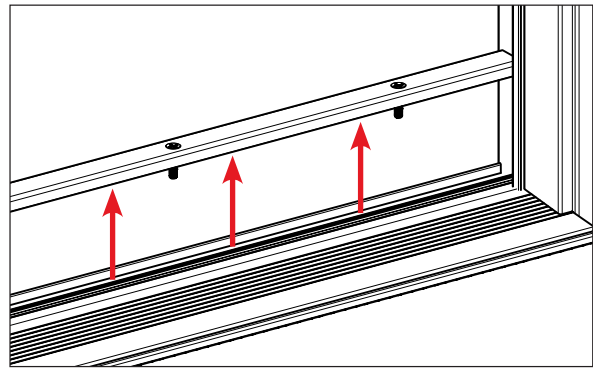


b. Pull sill cap out of channel and set aside.

For Oak Anchored Sill Caps:

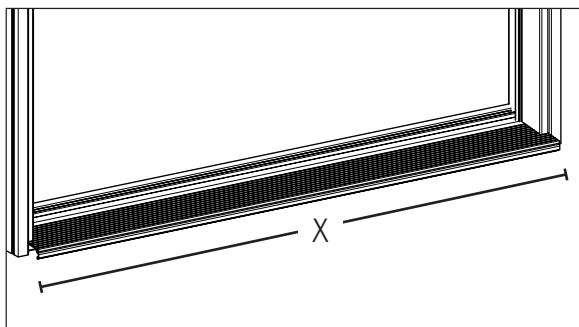


a. Partially loosen each screw, working from one end of the sill to the other. Then, fully loosen each screw until the sill cap separates from the channel.

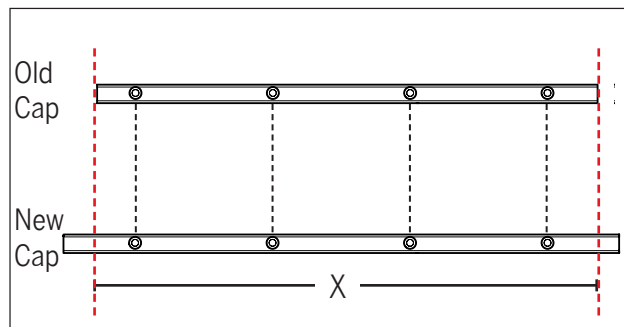


b. Pull the sill cap out of the channel and set aside.


STEP 3: CUT NEW SILL CAP TO LENGTH



a. Measure the entire sill length to get required new cap length (X).

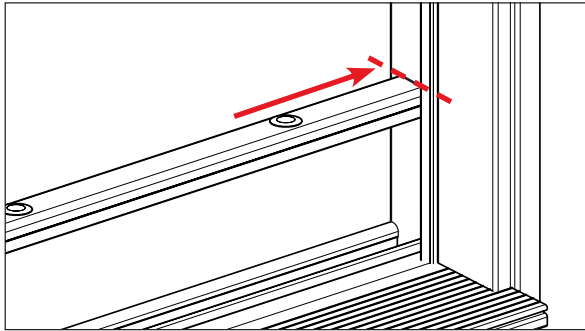


b. Using the old sill cap as reference, size the new sill cap. Cut from both ends of the cap to ensure the screw holes align.

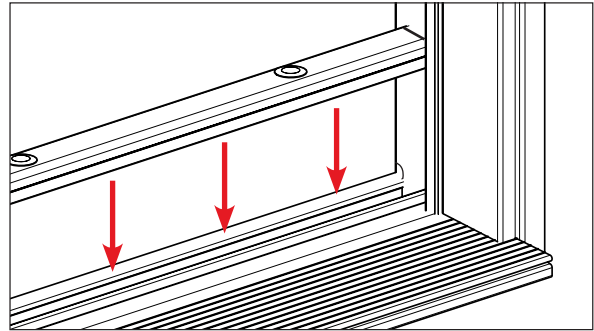
 Measure carefully and cut precisely to avoid damaging the new cap.

STEP 4: ASSEMBLE NEW SILL CAP

For Z-Series Adjustable Sill Caps:

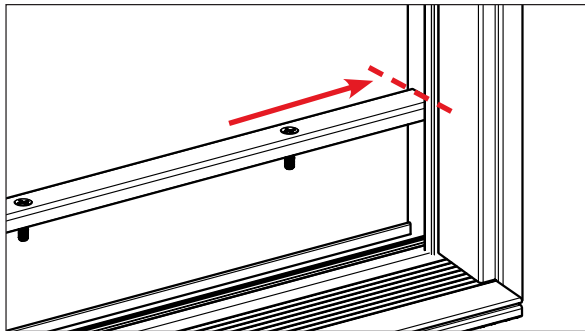


a. Align one end of new sill cap with jamb face.

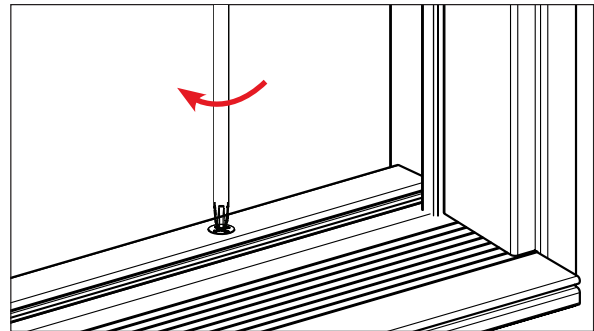


b. Push the cap firmly into sill channel with hands, working along the length of the cap until fully seated.

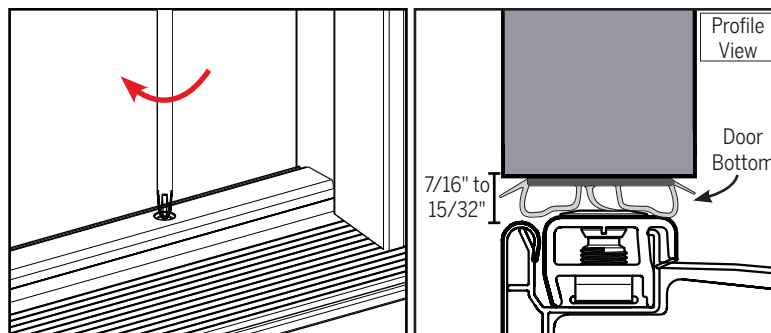
For Oak Anchored Sill Caps:



a. Align one end of new sill cap with jamb face.



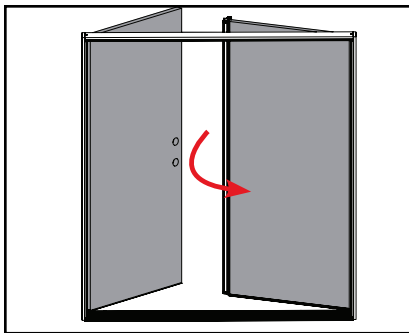
b. Partially tighten each screw, working from one end to the other - then, fully tighten all screws until the sill cap is seated in the sill channel.



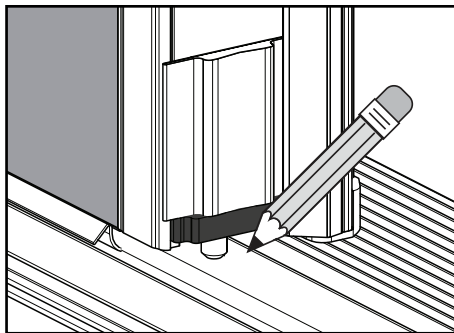
NOTE: The door should open and close with minimal effort, with the door bottom sweeping the sill cap.

If necessary, adjust the cap height by removing sill cap plugs and using a screwdriver to loosen or tighten the screws. Ensure proper and even door bottom seal compression, from 7/16" to 15/32".

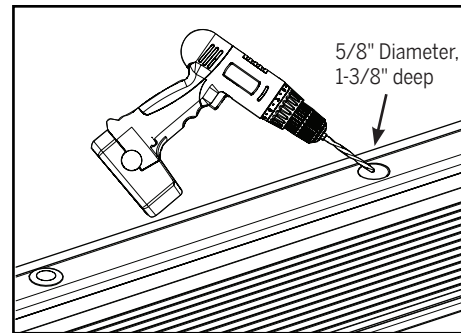
STEP 5: INSTALL BOLT RECEIVER CUP - FRENCH DOOR UNITS ONLY



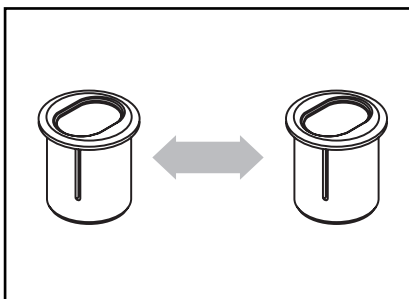
a. Close the passive door panel.



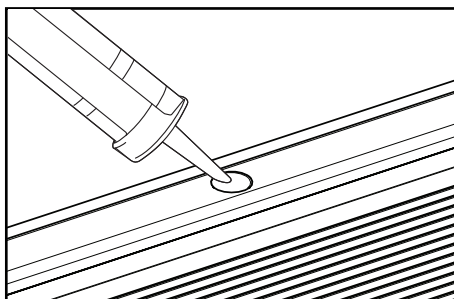
b. Move the astragal lower bolt down until the pin contacts the sill cap and mark where the bolt pin contacts the sill cap.



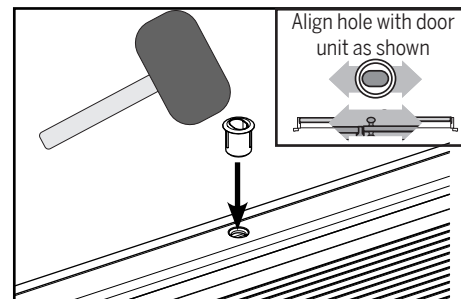
c. Drill a hole that is 5/8" diameter and 1-3/8" deep to install the bolt receiver.



d. Ensure the **new** receiver cup size matches the **old** receiver cup size.

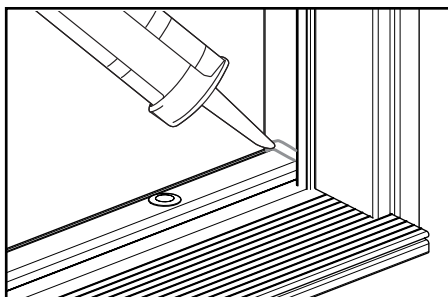


e. Fill the bottom half of the sill cap hole with exterior grade caulking.

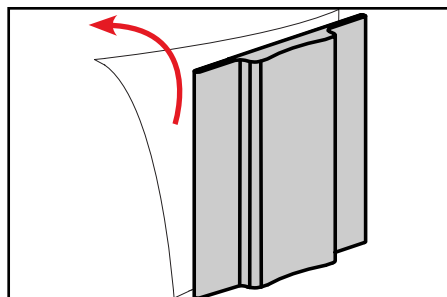


f. Insert the **new** receiver into the hole, orienting the long side of the hole parallel to sill cap as shown. Tap into place with a rubber mallet.

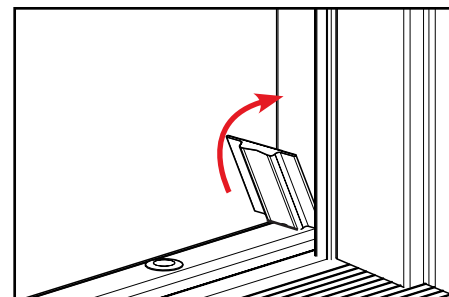
STEP 6: REPLACE CORNER PADS



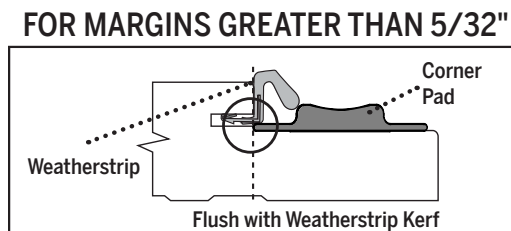
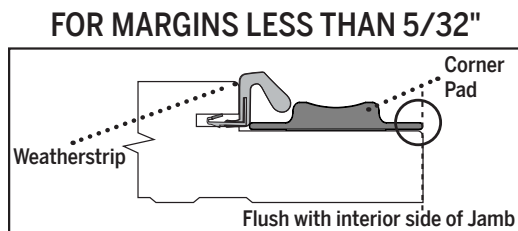
a. Caulk joint between sill cap and jamb (on front and top edges of cap) prior to installing a corner pad.



b. Remove backing paper from the corner pad to expose adhesive.



c. Align the bottom of the corner pad against the top of the sill cap.



d. Align with weatherstrip and jamb based on strike margins:

- **For strike margins less than 5/32":** Align the edge of the corner pad flush against the weatherstrip kerf.
- **For strike margins greater than or equal to 5/32":** Align the edge of the corner pad flush against the interior edge of the jamb.

e. Press the corner pad firmly into place to complete the installation.