

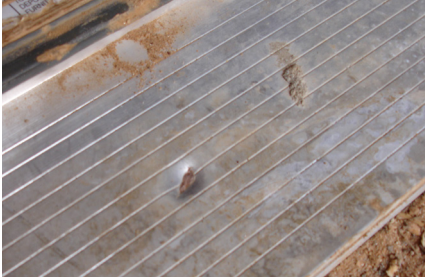


# IT'S NOT JUST ANOTHER SILL. IT'S A SOLUTION.

AND IT'S THE ONLY SILL THAT TAKES YOU FROM DAMAGED TO FLAWLESS  
IN A MATTER OF MINUTES WITH TOOLS ALREADY ON HAND.



# CONSTRUCTION SITES ARE MESSY— WHO'S LEFT TO CLEAN UP THE MESS?



Over time, and even with the use of protective covering, aluminum decks on a sill can become dented, scratched, painted, oxidized, and stained from exposure to the elements of daily use of the entryway during construction. This results in the need to clean the sill – often requiring several visits, and sometimes replacement of the entire door unit.

## WHEN TIME IS MONEY, SAVE BOTH WITH RDS.™ IT'S EASY AS 1-2-3.

RDS makes an accident on the job site an easy fix. Drop a brick. Spill some paint. RDS's sill deck can be removed and replaced with ease, requiring only a few simple steps.



### 1. DISENGAGE.

Remove sill cap with a stiff putty knife; bend front edge away from the substrate.



### 2. REMOVE.

Slide the deck out, away from the sill.



### 3. REPLACE.

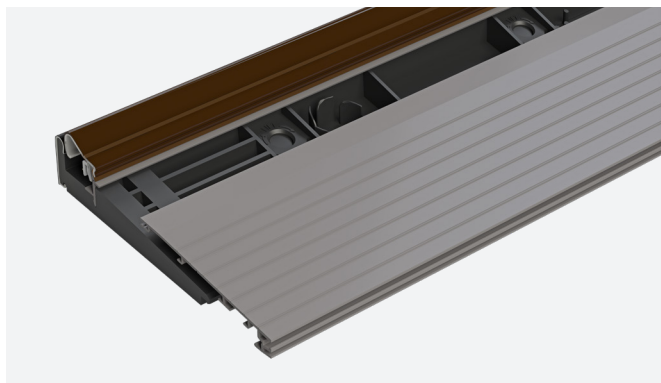
Slide the new deck into place and tap into place with mallet.



**IF YOU'RE PAYING FOR SILL DECK DAMAGE, YOU'RE PAYING TOO MUCH.  
STOP PAYING FOR IT AND START PLANNING FOR IT WITH RDS.**



## ONE COST-CUTTING SOLUTION. TWO TIME-SAVING OPTIONS.



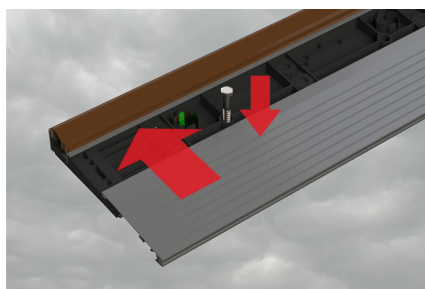
### OPTION 1: PRE-INSTALLED ALUMINUM DECK

Replace damaged aluminum sill deck with a flawless new one in a matter of minutes and with tools already on hand.



### OPTION 2: CONSTRUCTION DUNNAGE

Prevent damage with a temporary dunnage sill cap and deck during construction. Then simply install final components.



### FLAWLESSLY MEET BUILDING CODE REQUIREMENTS.

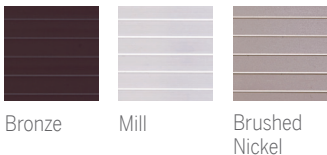
Removable sill deck conceals subfloor anchoring screws so you can meet necessary code requirements without sacrificing a clean sill appearance.



## RDS™ PRODUCT OFFERING

|                     |                |                                  |                              |                                 | Substrate Width |        |              |         |         |        |
|---------------------|----------------|----------------------------------|------------------------------|---------------------------------|-----------------|--------|--------------|---------|---------|--------|
|                     | Configurations | Cuttable to                      | Available finishes           | Compatible Caps                 | 4-9/16"         | 5-5/8" |              | 6-9/16" |         |        |
|                     |                |                                  |                              |                                 | Deck Profiles   |        |              |         |         |        |
|                     |                |                                  |                              |                                 | 4-9/16"         | 5-5/8" | 5-5/8" w/ SR |         | 6-9/16" | 7-5/8" |
| Single & French     | 2/6            | -----                            | Mill, Bronze, Brushed Nickel | ZAI, ZAI-AA, Z-AC, Z-AC-AA, ZOB | ✓               | ✓      | ✓            | ✓       | ✓       | ✓      |
|                     | 2/8            | 2/6                              |                              |                                 | ✓               | ✓      | ✓            | ✓       | ✓       | ✓      |
|                     | 3/0            | 2/10                             |                              |                                 | ✓               | ✓      | ✓            | ✓       | ✓       | ✓      |
|                     | 3/6            | -----                            |                              |                                 | ✓               | ✓      | ✓            | ✓       | ✓       | ✓      |
|                     | 6/0            | 5/8, 5/4, 5/0                    |                              |                                 | ✓               | ✓      | ✓            | ✓       | ✓       | ✓      |
| Continuous Sidelite | 1/0-3/0        | 0/10-3/0                         | Mill, Bronze, Brushed Nickel | ZAI, ZAI-AA, Z-AC, Z-AC-AA, ZOB | -----           | ✓      | ✓            | -----   | -----   | -----  |
|                     | 1/2-3/0        | 1/0-3/0                          |                              |                                 | ✓               | ✓      | ✓            | ✓       | ✓       | ✓      |
|                     | 3/0-1/0        | 3/0-0/10                         |                              |                                 | -----           | ✓      | ✓            | -----   | -----   | -----  |
|                     | 3/0-1/2        | 3/0-1/0                          |                              |                                 | ✓               | ✓      | ✓            | ✓       | ✓       | ✓      |
|                     | 1/0-3/0-1/0    | 0/10-3/0-0/10                    |                              |                                 | -----           | ✓      | ✓            | -----   | -----   | -----  |
|                     | 1/2-3/0-1/0    | 1/0-3/0-1/0                      |                              |                                 | ✓               | ✓      | ✓            | ✓       | ✓       | ✓      |
| Patio               | 3/0-3/0        | 2/10-2/10<br>2/8-2/8,<br>2/6-2/6 | Mill, Bronze, Brushed Nickel | ZAI, ZAI-AA, Z-AC, Z-AC-AA, ZOB | ✓               | ✓      | ✓            | ✓       | ✓       | ✓      |

## DECK FINISHES



Bronze Mill Brushed Nickel

## COMPOSITE CAP FINISHES

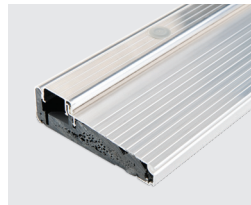
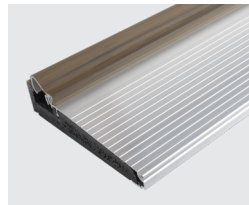
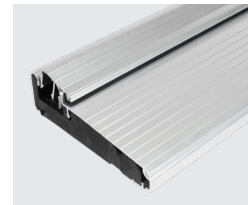
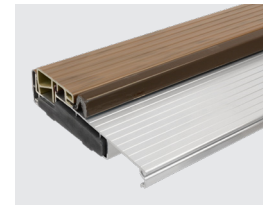


Dark Walnut Castle Oak Black

## ALUMINUM CAP FINISHES



Bronze Mill


**ZAI**  
Z-Series Adjustable Inswing Sill

**ZAI-AA**  
All-Aluminum Z-Series Adjustable Inswing Sill

**Z-AC™**  
Z-Series Articulating Cap Sill™

**Z-AC-AA**  
All-Aluminum Z-Series Articulating Cap Sill™

**ZOB**  
Z-Series Outswing Bumper Sill
