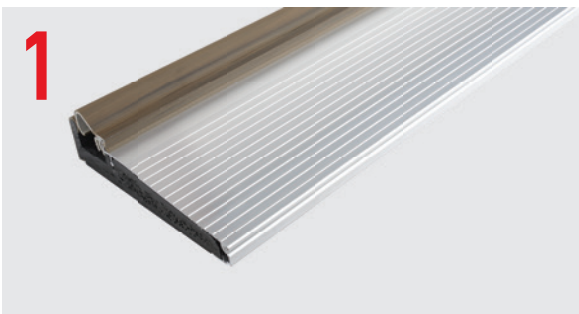
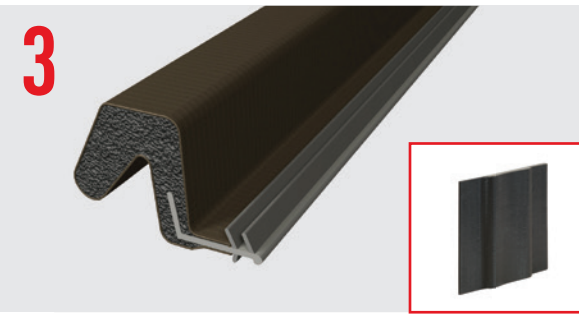


THE HIGHEST-PERFORMING COMPONENTS



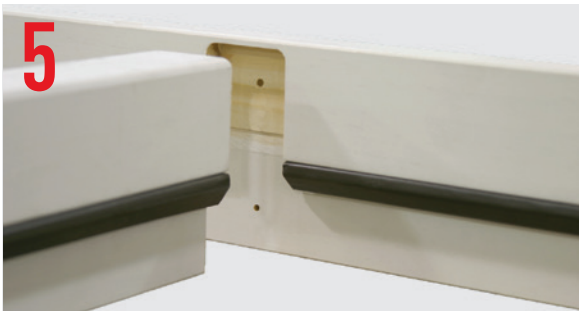
COMPONENT 1: Z-SERIES SILLS
Z-Series Sills provide the best combination of performance and value.

- 1. Built to last with all-composite substrates
- 2. Modularity for savings and flexibility
- 3. Never needs adjustments (Z-AC only)
- 4. Seals with imperfect margins (Z-AC only)



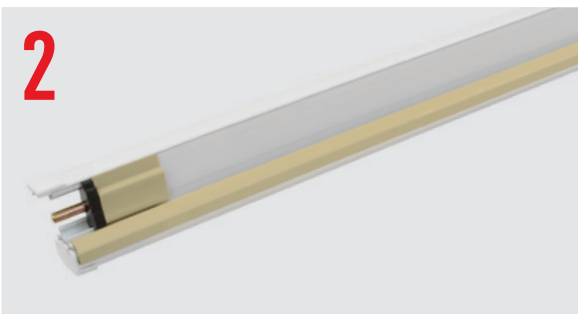
COMPONENT 3: WEATHERSEALS
Weatherseals designed, engineered and tested to provide the ultimate protection from outside elements.

- 1. Offers more contact surface with door panel
- 2. Low-Wick Weatherseals
 - Absorbs 50% Less Water
 - Available in PE650 & Simple Solution™ Corner Pads



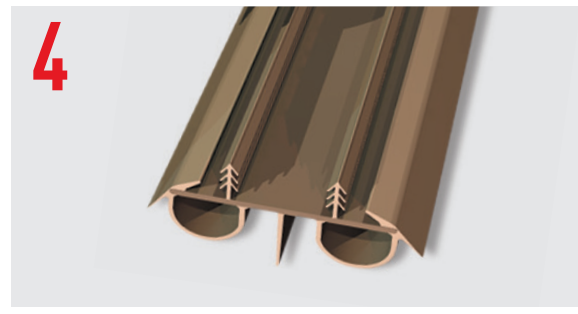
COMPONENT 5: CONTINUOUS SILLS, HEADERS AND ONE-PIECE MULLS
Endura's continuous sills, headers and one-piece mulls eliminate joints that allow water and air intrusion.

- 1. Parts are precisely machined to meet specifications and ensure a secure fit
- 2. Provides superior strength
- 3. Prevents racking & poor system performance



COMPONENT 2: ULTIMATE ASTRAGAL
The Ultimate Astragal has a floating three-point seal that resists damage because the seal is lifted when traveling over the threshold.

- 1. Patented, retractable floating boot eliminates the failure of the rubber boot
- 2. 4-way adjustable strike retainers



COMPONENT 4: DOOR BOTTOMS
Endura's Dual Bulb Door Bottoms offer a superior barrier against air and water.

- 1. Door bottom retains its shape and maintains tight contact with the sill
- 2. Prevents intrusion of the elements while allowing comfortable door sweep



Look for the Certified Powered By Endura™ Door System tag proudly displayed on our door systems

5 THINGS YOU GET WITH CERTIFIED POWERED BY ENDURA™

Endura created the Certified Powered By Endura Door System to provide customers with the best door systems available. With Certified Powered By Endura you get:

- 1. The Highest-Performing Door System Components
- 2. A Clearly Defined, Strong Warranty
- 3. Door Systems That Are Certified, Third-Party Tested
- 4. No Customer Callbacks on Door System Failure
- 5. A Marketing Program with Materials to Help You Sell Certified Powered By Endura



LEVELS OF CERTIFIED POWERED BY ENDURA™ PROTECTION

The Certified Powered By Endura Door System program is divided into different levels to best suit your specific needs.

LEVEL 1 WITH SILL PAN	
WITH MULTI-POINT	WITHOUT MULTI-POINT
✓ Z-Series Sill	✓ Z-Series Sill
✓ Ultimate Astragal	✓ Ultimate Astragal
✓ Multi-Point Astragal	✓ Multi-Point Astragal
✓ Dual Bulb Door Bottom	✓ Dual Bulb Door Bottom
✓ Simple Solution™ Corner Pad	✓ Simple Solution™ Corner Pad
✓ PE650 Low-Wick Weatherstrip	✓ PE650 Low-Wick Weatherstrip
✓ SureSill™ Pan	✓ SureSill™ Pan

LEVEL 2 WITHOUT SILL PAN	
WITH MULTI-POINT	WITHOUT MULTI-POINT
✓ Z-Series Sill	✓ Z-Series Sill
✓ Ultimate Astragal	✓ Ultimate Astragal
✓ Multi-Point Astragal	✓ Multi-Point Astragal
✓ Dual Bulb Door Bottom	✓ Dual Bulb Door Bottom
✓ Simple Solution™ Corner Pad	✓ Simple Solution™ Corner Pad
✓ PE650 Low-Wick Weatherstrip	✓ PE650 Low-Wick Weatherstrip
✓ SureSill™ Pan	✓ SureSill™ Pan

The information contained in this document is the confidential and proprietary information and trade secrets of Endura Products, Inc. Any disclosure, use or dissemination of such information without the express written permission of Endura Products, Inc. is strictly prohibited. Endura Products, Inc. also owns any and all intellectual property rights embodied in such information, including patent rights, copyrights, and trademark rights, and no license of any intellectual property right is intended, nor should any license be implied, as a result of the receipt of this document.

U.S. Patents: 6,219,971; 6,789,358; 7,350,336; 5,588,266; 5,611,173; 5,426,894; D354,572; D571,932; D571,932;
D571,932; D599,490

Rev. Date 3.17 Form# CPEDeal-17

**POWERED BY
ENDURA**

8817 W. Market St., Colfax, NC 27235
1.800.334.2006 www.enduraproducts.com



CERTIFIED POWERED BY ENDURA™ DOOR SYSTEMS

Certified Powered By Endura™ Door Systems by Endura Products provide long-lasting protection against air and water infiltration. Precise engineering and certified testing deliver maximum performance.





PERFORMANCE.

WHY DO CERTIFIED POWERED BY ENDURA™ DOOR SYSTEMS PERFORM?

The Certified Powered By Endura Door System program is a combination of state-of-the-art Certified Powered By Endura products, certified testing, and a performance warranty to create reliable and competitive door systems.

Endura developed the Certified Powered By Endura Door System to produce the highest-performing door systems available which reduce the possibilities and causes of door unit failure. Utilizing the Certified Powered By Endura Door System eliminates:

- Customer Callbacks
- Wasted Time on Repairs
- Lost Productivity on Repairs
- Lost Revenue on Repairs
- Expensive Damage Due to Water Leaks

Certified Powered By Endura Door Systems are superior because the parts are designed to work together. When these components are used in conjunction, the seal between the door and the opening is maximized, and air and water infiltration is minimized.

Certified Powered By Endura Door Systems provide:

- **Superior Performance** - Certified Powered By Endura provides you with a certified third-party tested and field proven door system backed by a warranty you pass on to your customers.
- **Components That Work Together** - Certified Powered By Endura is a complete system of components designed specifically for your door slabs. You benefit directly from our engineering and certified testing.
- **You Can Sell And Stand Behind Certified Powered By Endura** - The Certified Powered By Endura Door System is something you can sell with confidence. You get proven performance and a warranty your customer can transfer to the homeowner. This valuable feature builds your company's reputation and market share.
- **Certified Powered By Endura Marketing Tools** - The program provides you with attractive and effective marketing materials to help you sell Certified Powered By Endura Door Systems.

WARRANTED.

WHAT IS THE CERTIFIED POWERED BY ENDURA™ DOOR SYSTEM WARRANTY?

It's a clearly defined, strong warranty. Endura stands behind Certified Powered By Endura Door System performance with a clearly stated and powerful warranty your customer can transfer to the homeowner. The combination of the highest quality door system components along with our guarantee will improve your reputation and market share.

WARRANTY PERIOD

Lifetime, non-transferable Warranty from the date the Certified Powered By Endura Door System was purchased.

UNIT IDENTIFICATION

Each Certified Powered By Endura Door System may be identified by a non-removable tag or label identifying such Certified Powered By Endura door unit.



WARRANTY EXCLUSIONS

There are exclusions that the Certified Powered By Endura warranty will not cover including changing components and improper installation.

CLAIMS

Claims must be initiated promptly following Warranty Holder's earliest awareness of a potential issue.

GENERAL CONDITIONS

This is the only express warranty applicable to Certified Powered By Endura Door Systems and no one is authorized to modify or expand this Warranty.

WARRANTY REIMBURSEMENT

Applies if the Certified Powered By Endura Door System includes all of the applicable components referenced above, has been properly assembled and installed following recommended Certified Powered By Endura procedures, has not been subjected to changes in rough opening dimensions and stability (i.e. plumb and square) and has been properly maintained by the Warranty Holder, and the product (or components) fails to perform to the certified and published levels of air and water infiltration applicable to the Door System during the Warranty Period solely due to non-conformities in the product as warranted, and Endura is notified using Certified Powered By Endura Warranty Claims Procedures.

CERTIFIED POWERED BY ENDURA WARRANTY REIMBURSEMENT GUIDELINES ^(a)				
	With Sill Pan ^(b)		Without Sill Pan	
Components Utilized	With Multi-Point Lock ^(c)	Without Multi-Point	With Multi-Point Lock ^(c)	Without Multi-Point
Single Door Multiple Panel Door ^(d)	\$500 \$1,500	\$350 \$1,000	\$275 \$750	\$200 \$500
FrameSaver Single/French Door CSL/Hinged Patio	Add \$75 \$150	Add \$75 \$150	Add \$75 \$150	Add \$75 \$150
NAMI Certified Assembly ^(e)	Add \$100	Add \$100	Add \$100	Add \$100

^(a)For complete Certified Powered By Endura Warranty information, visit our website: www.enduraproducts.com



CERTIFIED.

HOW ARE CERTIFIED POWERED BY ENDURA™ DOOR SYSTEMS THIRD-PARTY CERTIFIED TESTED?

Third-Party Certified Powered By Endura Door System testing is conducted by or witnessed by an accredited entity that is independent from the manufacturer whose door product is being tested. Endura, in conjunction with a third party, conducts independent testing on door units incorporating panels from most major manufacturers for Certified Powered By Endura results.

WHY IS CERTIFIED TESTING IMPORTANT?

Testing is important because it provides information on the performance capability of a door system. In markets where building codes dictate minimum performance requirements, it is only through testing that a door system's capability can be understood. Testing results can also be used for general marketing purposes, even if code requirements do not exist.

EXAMPLE OF THIRD-PARTY CERTIFIED POWERED BY ENDURA TESTING*

Config.	Height	Swing	Lock	Fiberglass - Textured Flush Glass				Fiberglass - Smooth Flush Glass				Steel - Wood Edge Insert Glass			
				Air	Water	Structural	Cert. Report #	Air	Water	Structural	Cert. Report #	Air	Water	Structural	Cert. Report #
X X	6/8	Inswing	Double Bore	0.08	DP25	DP+40/-45	NCTL-110-13238-1					0.03	DP30	DP+35/-40	NCTL-110-13235-1
			Hoppe MP	0.00	DP40	DP35	CTL 1646W-6a	0.00	DP40	DP35	CTL 1646W-6a	(This Configuration Not Tested)			
			Ult MP	0.05	DP40	DP+45/-50	NCTL-110-12110-6								
		Outswing	Double Bore	0.01	DP55	DP+50/-45	NCTL-110-13238-2					0.06	DP50	DP30	NCTL-110-13235-2
			Hoppe MP	0.03	DP45	DP40	CTL 1646W-2a	0.00	DP40	DP45	CTL 1646W-2a	(This Configuration Not Tested)			
			Hoppe MP	0.07	DP20	DP40	NCTL-110-13238-3					0.06	DP25	DP+30/-35	NCTL-110-13235-3
	8/0	Inswing	Double Bore	0.01	DP40	DP40	CTL 1646W-1a	0.00	DP40	DP35	CTL 1646W-1a	(This Configuration Not Tested)			
			Ult MP	0.05	DP40	DP+45/-50	NCTL-110-12110-1					0.02	DP40	DP+40/-45	NCTL-110-12110-6
			Double Bore	0.01	DP70	DP+45/40	NCTL-110-13238-4					0.01	DP80	DP+50/-45	NCTL-110-13235-4
		Outswing	Hoppe MP	0.00	DP45	DP30	CTL 1646W-1a	0.01	DP40	DP25	CTL 1646W-1a	(This Configuration Not Tested)			
			Double Bore	0.04	DP35	DP+50/-55	NCTL-110-13238-5					0.00	DP55	DP+35/-40	NCTL-110-13235-5
			Hoppe MP	0.01	DP45	DP35	CTL 1646W-8a	0.02	DP50	DP40	CTL 1646W-8a	(This Configuration Not Tested)			
X O X	6/8	Inswing	Double Bore	0.02	DP70	DP60	NCTL-110-13238-6					0.00	DP70	DP40	NCTL-110-13235-6
			Hoppe MP	0.00	DP50	DP45	CTL 1646W-7a	0.00	DP50	DP30	CTL 1646W-7a	(This Configuration Not Tested)			
		Outswing	Double Bore	0.04	DP30	DP+40/-45	NCTL-110-13238-7					0.01	DP35	DP+30/-35	NCTL-110-13235-7
			Hoppe MP	0.01	DP50	DP30	CTL 1646W-4a	0.01	DP50	DP30	CTL 1646W-4a	(This Configuration Not Tested)			
			Double Bore	0.02	DP65	DP40	NCTL-110-13238-8					0.01	DP70	DP+30/-25	NCTL-110-13235-8
			Hoppe MP	0.03	DP75	DP35	CTL 1646W-5a	0.01	DP55	DP50	CTL 1646W-5a	(This Configuration Not Tested)			
	8/0	Inswing	Double Bore	0.00	DP50	DP45	CTL 1646W-3a	0.01	DP55	DP50	CTL 1646W-3a	(This Configuration Not Tested)			
			Hoppe MP									(This Configuration Not Tested)			
		Outswing	Double Bore									(This Configuration Not Tested)			
			Hoppe MP									(This Configuration Not Tested)			
			Double Bore									(This Configuration Not Tested)			
			Hoppe MP									(This Configuration Not Tested)			
X ^(f)	8/0	Inswing	Hoppe MP	0.00	DP50	DP45	CTL 1646W-3a	0.01	DP55	DP50	CTL 1646W-3a	(This Configuration Not Tested)			

*Chart provided as example only. See our Web site for detailed testing information: www.enduraproducts.com