

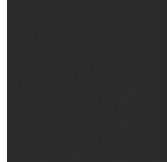
FLUSH BOLT FINISH GUIDE: Flip Metal Flush Bolts vs. Push Metal Flush Bolts

When replacing the metal bolts on a wood or an alumawood astragal, you will have two options to choose from—a Flip Metal Flush Bolt or a Push Metal Flush Bolt. These bolts are the same in size, making them interchangeable despite their differences in how they lock. Additionally, these bolts differ in their available finishes. Please review the graphic below to compare the finish options and design differences between the Flip Metal Flush Bolt and the Push Metal Flush Bolt.

FLIP METAL FLUSH BOLT



*Shown in
Matte Chrome*



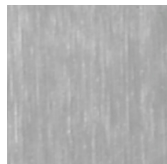
Bronze-Black



Brass



Satin Nickel



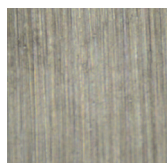
Matte Chrome



Polished Chrome



Antique Brass



Antique Nickel

PUSH METAL FLUSH BOLT



*Shown in
Matte Chrome*



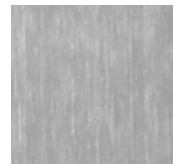
Bronze-Black



Brass



Satin Nickel



Matte Chrome