

Ultimate Trilennium® Astragal Upper Flush Bolt

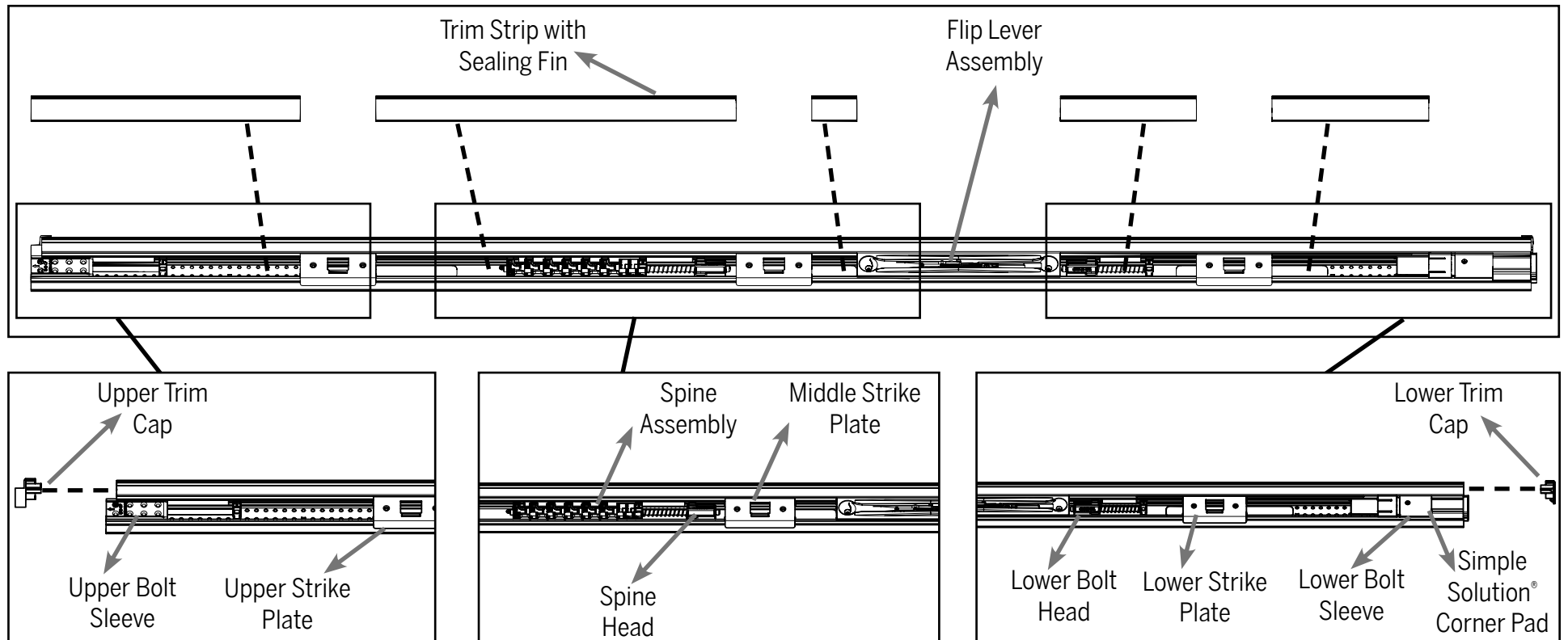
Replacement Instructions

Tools Required:

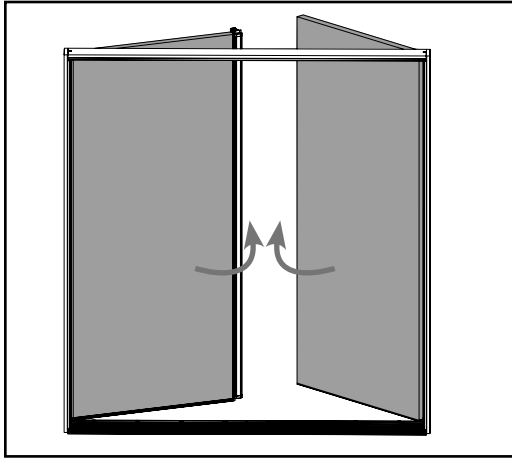


Phillips
Screwdriver

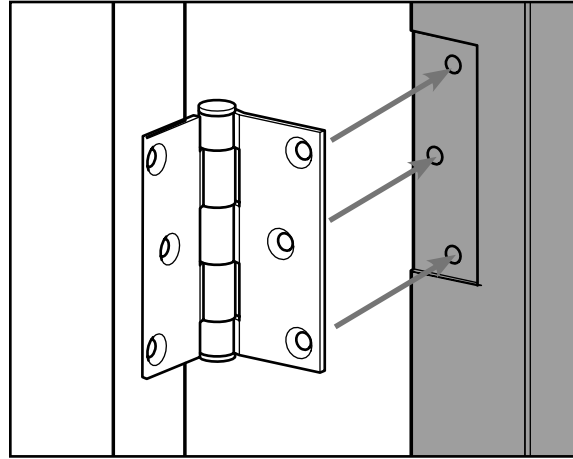
Product Reference Guide - Ultimate Trilennium Astragal



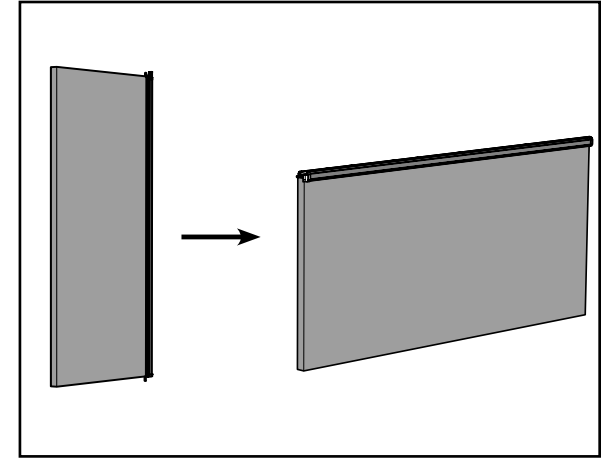
STEP 1: REMOVE THE INACTIVE DOOR PANEL FROM THE JAMB



a. Open both door panels to access the hinges of the inactive door panel.



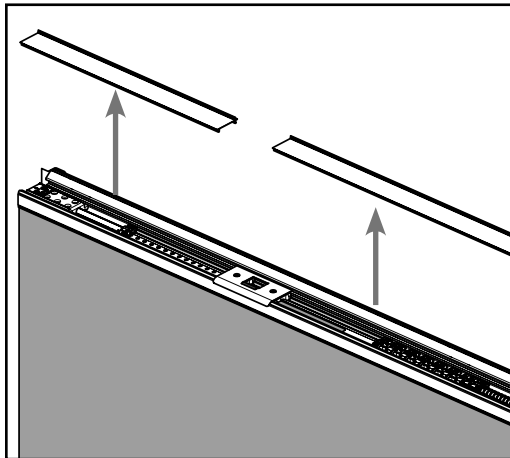
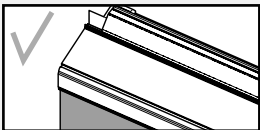
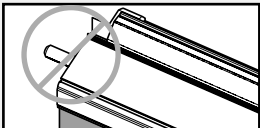
b. Remove the screws securing the inactive door to the hinges.



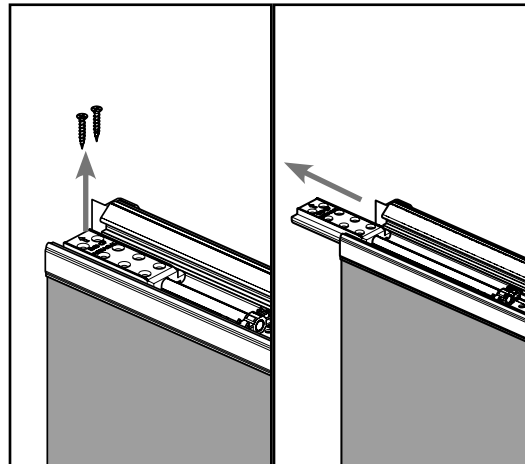
c. Place the door panel horizontally against a strong support to access the astragal.

STEP 2: REMOVE THE OLD BOLT FROM THE ASTRAGAL BODY

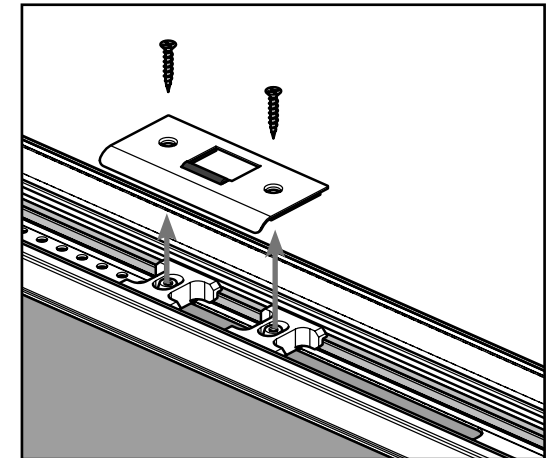
Ensure the upper bolt is in the unlocked position before removing.



a. Remove the two pieces of trim strip on either side of the upper strike plate.

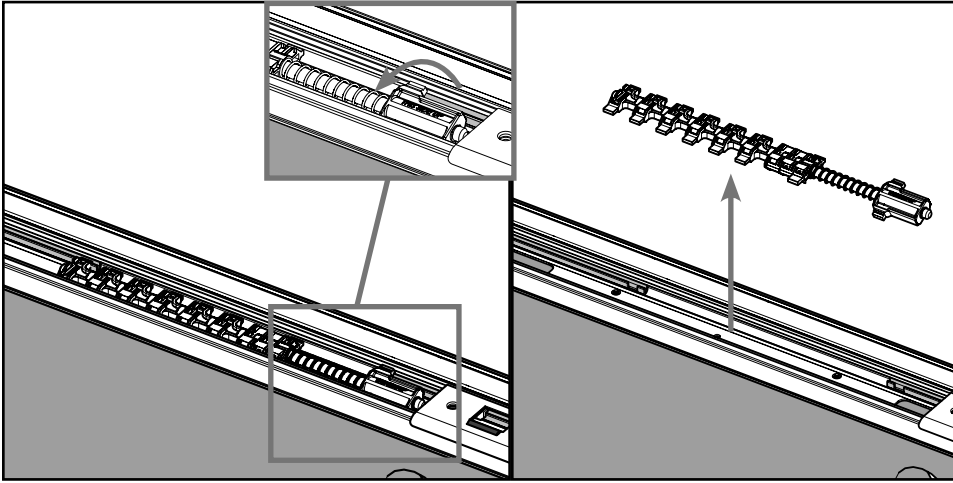


b. Remove the screws securing the upper bolt sleeve and slide out the bolt sleeve. Set aside.



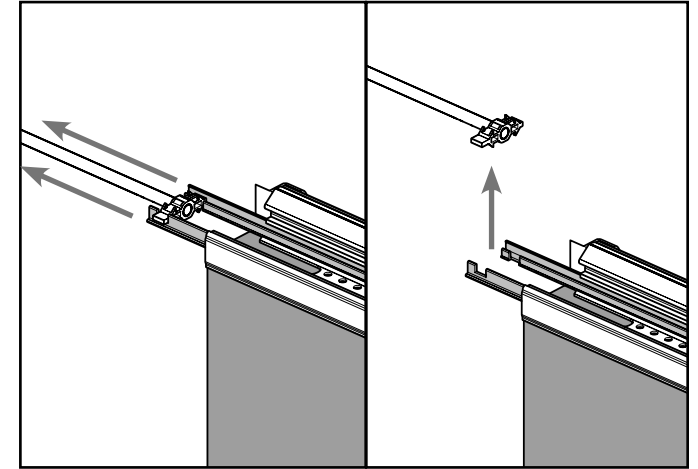
c. Unscrew the upper strike plate assembly and set aside.

STEP 2 (CONT.): REMOVE THE OLD BOLT FROM THE ASTRAGAL BODY



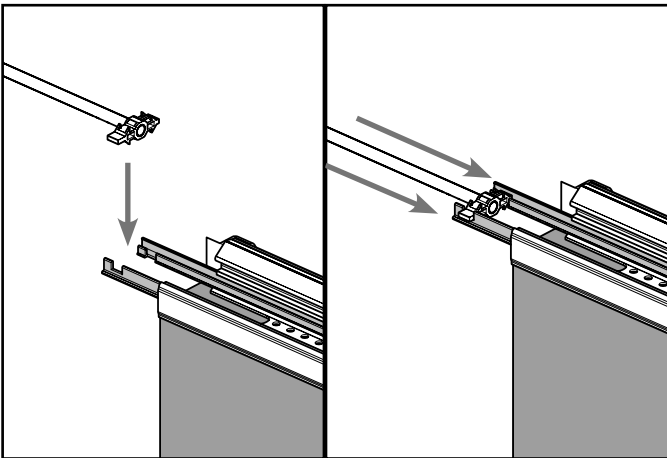
d. Rotate the upper bolt head and spine assembly out of the drive rods in the astragal. Remove the assembly from the astragal body.

**Note the exact location and orientation of the spine assembly and the bolt head in order to reinstall correctly. We recommend taking a photograph for reference.

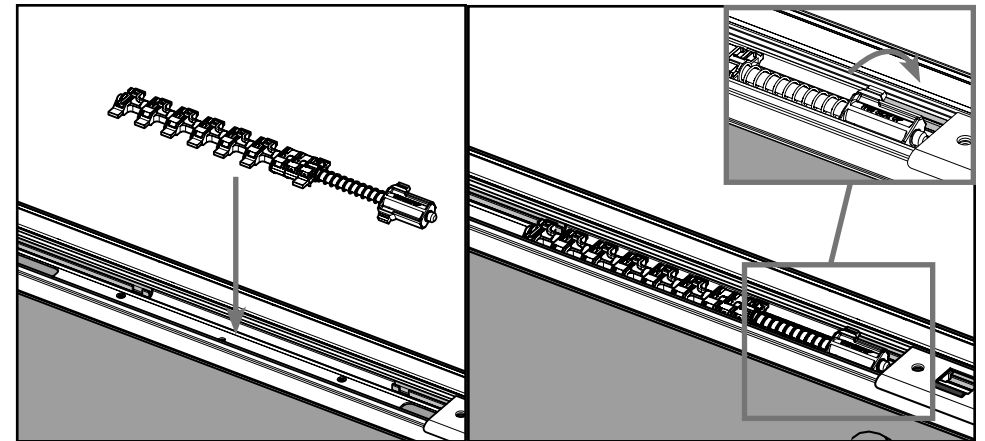


e. Slide out the metal drive rods and remove the shoot bolt.

STEP 3: INSTALL NEW BOLT

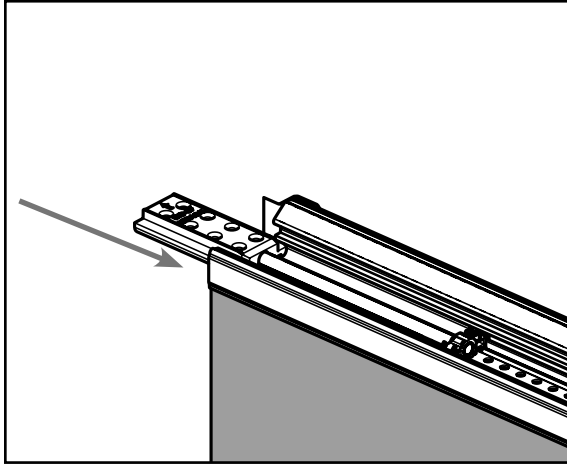


a. Return the shoot bolt so its engagement head notches securely into the grooves on the metal drive rods. Slide the rods back into the astragal body.

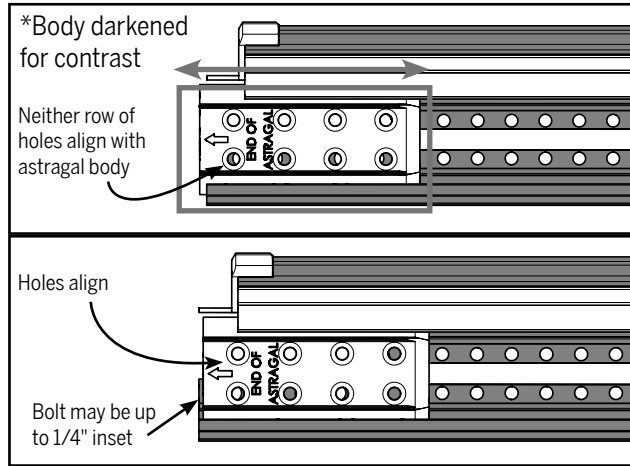


b. Replace the spine assembly in the exact location from which it was removed.

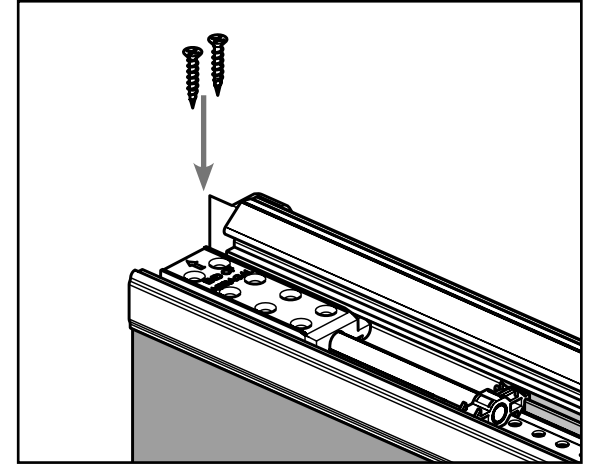
STEP 3 (CONT.): INSTALL NEW BOLT



c. Slide the bolt sleeve back into the astragal body.

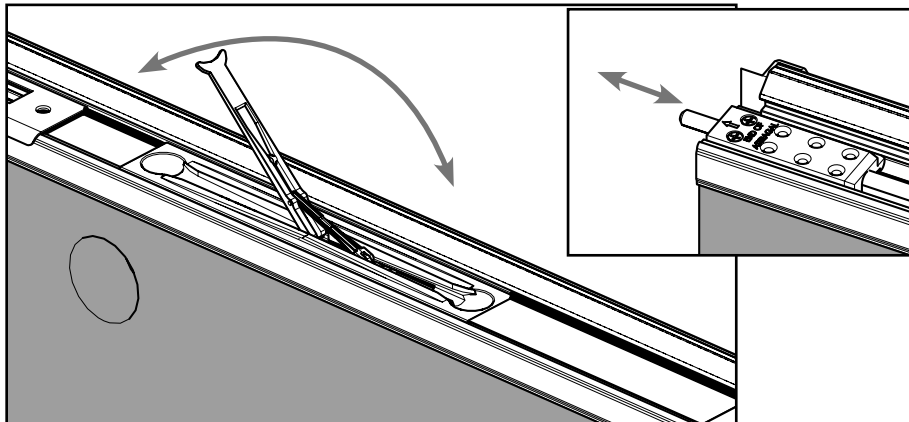


d. If the holes on the bolt sleeve do not initially align with the holes in the astragal body, adjust the location of the bolt sleeve to align the holes. The bolt sleeve may be up to 1/4" inset from the end of the astragal.



e. Insert screws into the holes in the bolt sleeve that align with the holes in the astragal body.

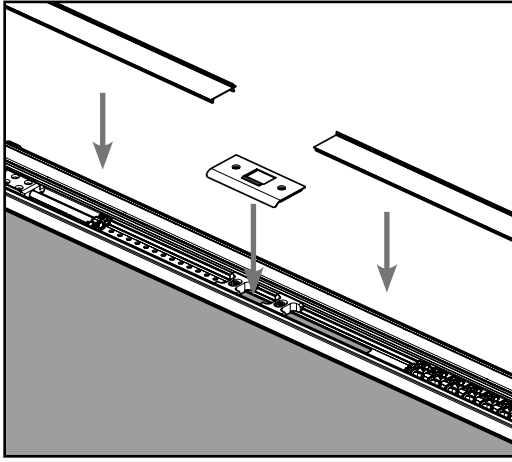
STEP 4: CHECK BOLT OPERATION



a. Engage the flip lever to confirm the upper bolt moves in and out smoothly.

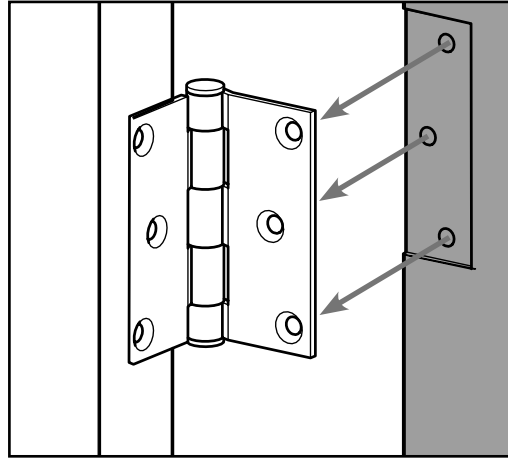
b. If the bolt does not operate smoothly, check for bolt obstructions and ensure screws in the astragal are not overtightened. The top of the screw should be just flush with the astragal body.

STEP 5: REINSTALL THE DOOR PANEL

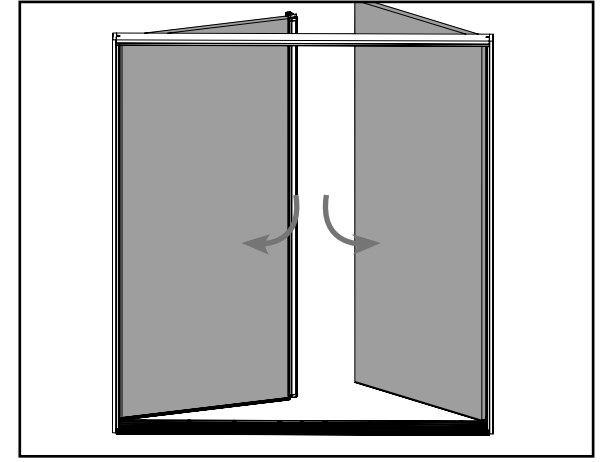


a. Reinstall the upper strike plate and trim strips previously removed from the astragal body.

Note: The sealing fin on the trim strip should be directly next to the weatherstrip.



b. Reinstall the inactive door panel by screwing the door panel back to the hinges.



c. Close the inactive door and lock the bolts to ensure the bolts contact the header and sill receivers properly.