

Ultimate Slide Bolt Astragal Flush Bolt

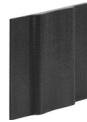
Replacement Instructions

Tools Required:



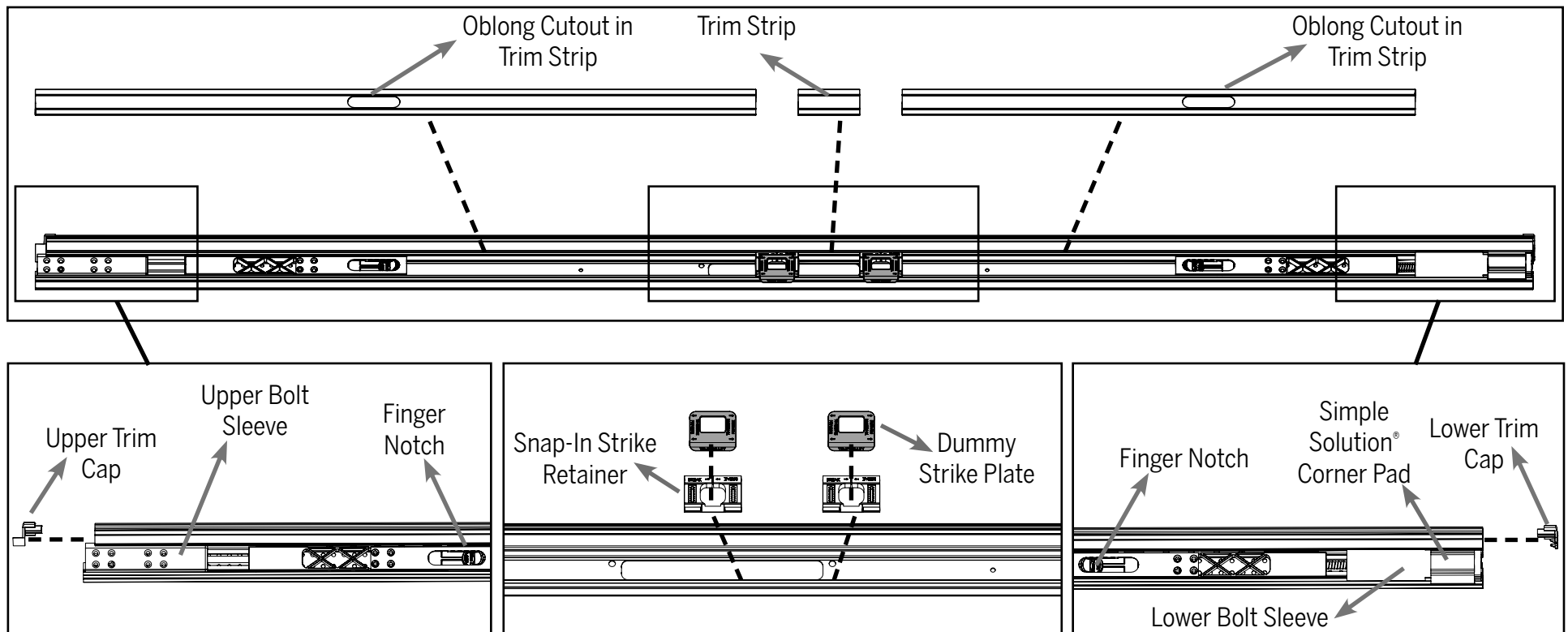
Phillips
Screwdriver

Recommended Parts for Lower Flush Bolts:

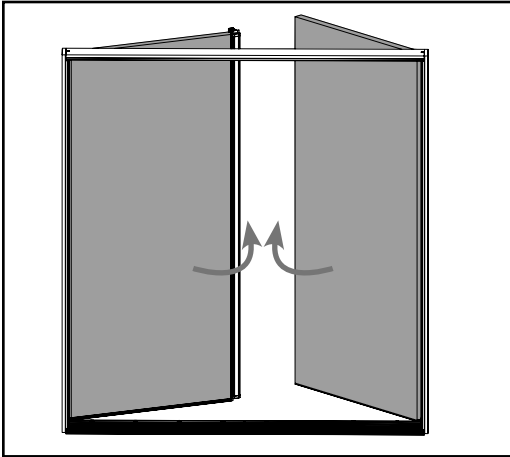


Endura Simple Solution
Corner Pad

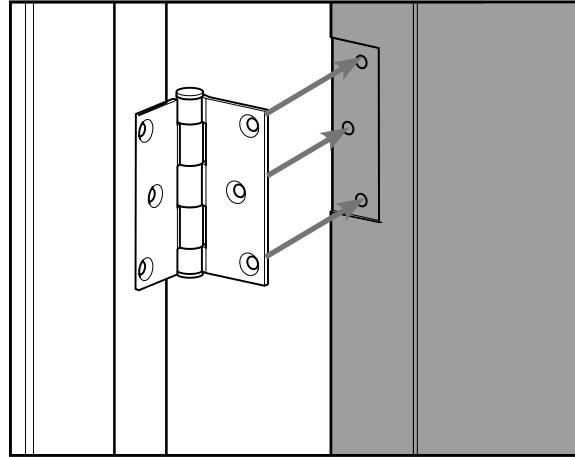
Product Reference Guide



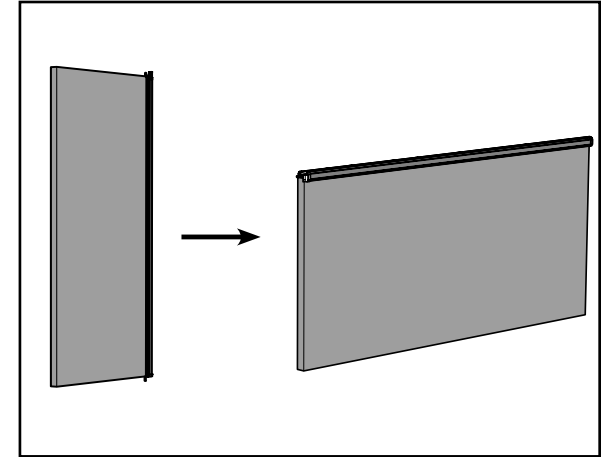
STEP 1: REMOVE THE INACTIVE DOOR PANEL FROM THE JAMB



a. Open both door panels to access the hinges of the inactive door panel.

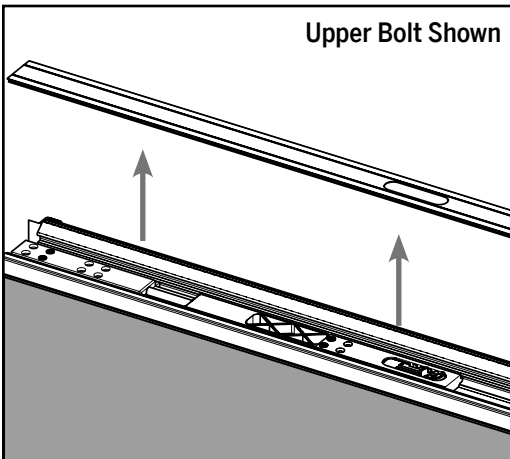


b. Remove the screws securing the inactive door to the hinges.

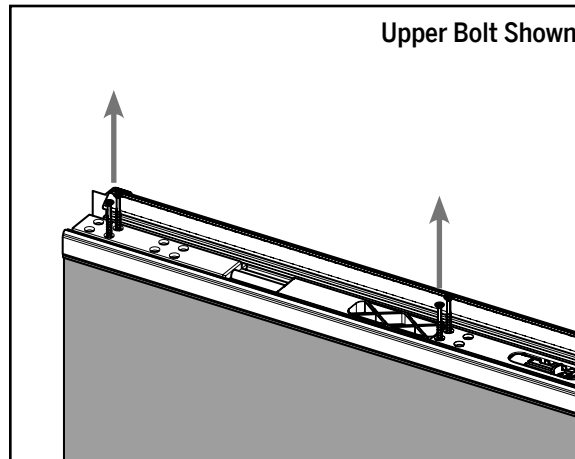


c. Place the door panel horizontally against a strong support to access the astragal.

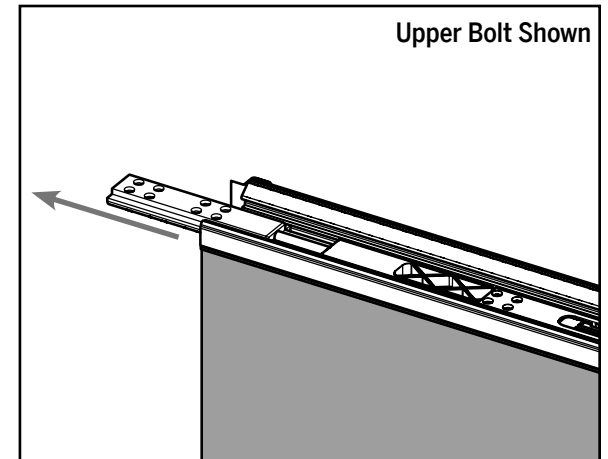
STEP 2: REMOVE THE OLD BOLT FROM THE ASTRAGAL BODY



a. Remove the trim strip covering the bolt being replaced and set aside.

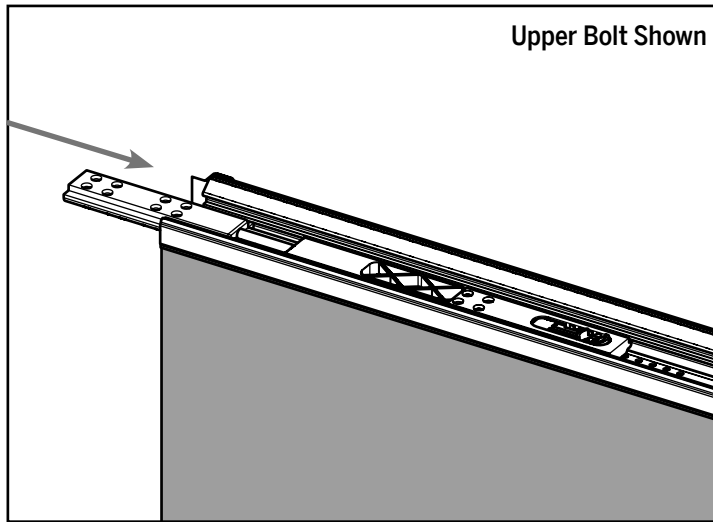


b. Remove the screws securing the bolt into the astragal body and door panel and set aside.

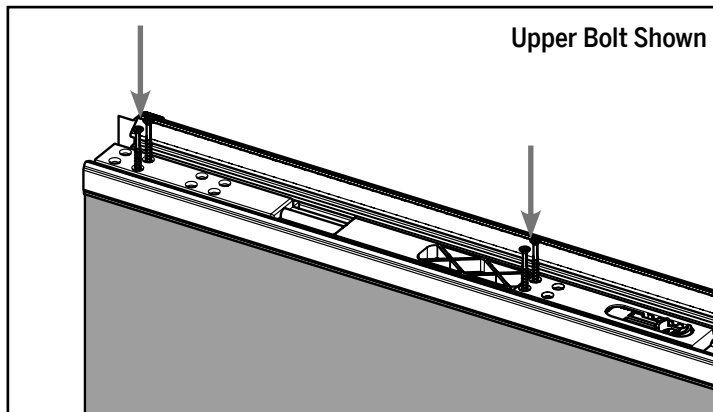


c. Slide the bolt out of the astragal and discard.

STEP 3: INSTALL NEW BOLT



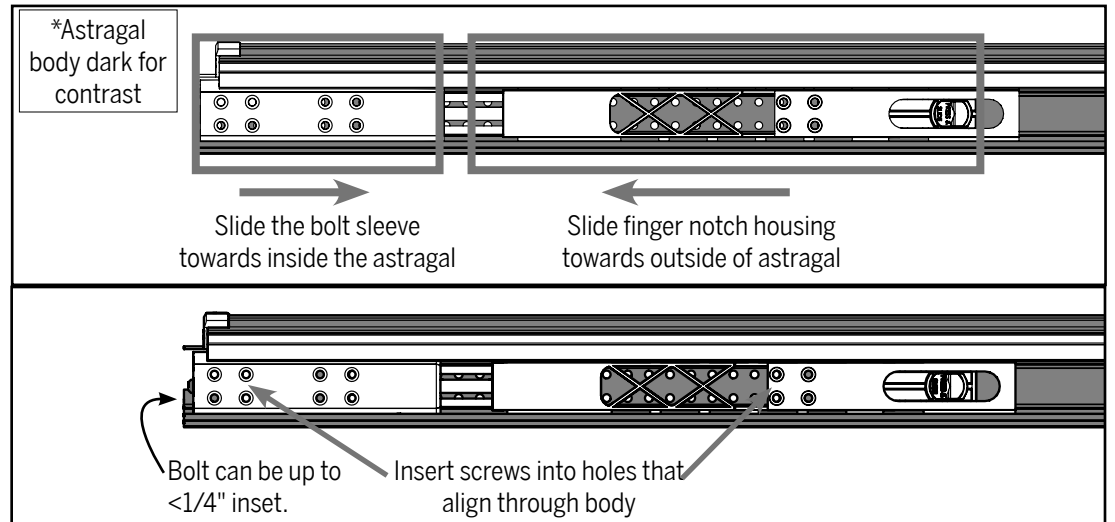
a. Slide the new bolt into the astragal body until the end of the bolt sleeve is flush with the end of the astragal.



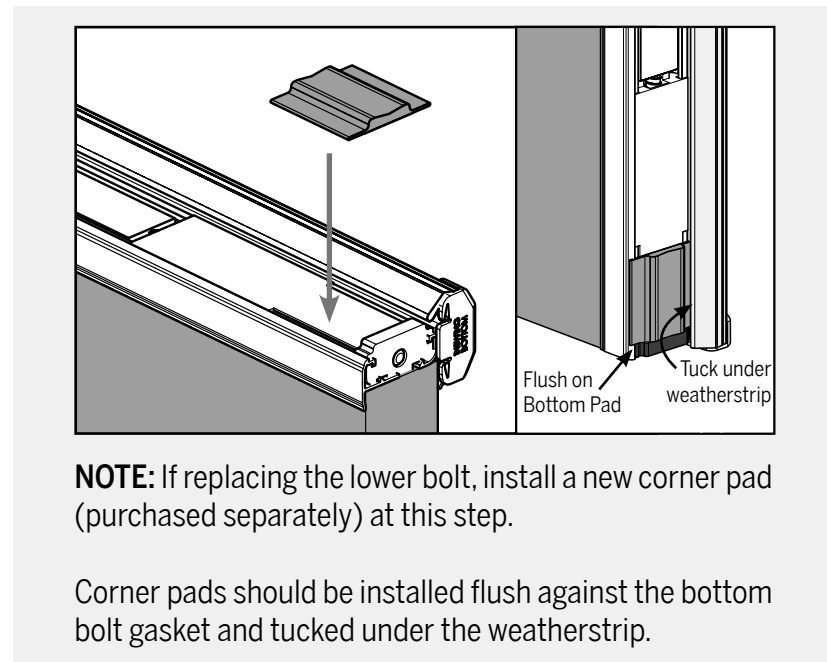
c. With holes aligned on the bolt sleeve and the finger notch housing, insert the screws previously removed through the holes and tighten.



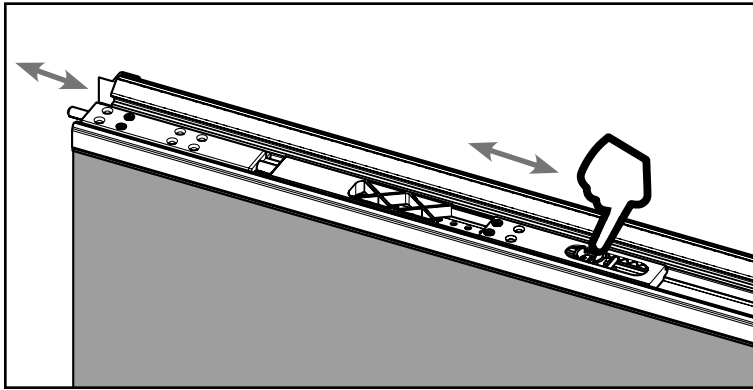
You should install a total of **4** screws if replacing the upper bolt or **2** screws if replacing the bottom bolt.



b. If the holes on the bolt do not align with the holes in the astragal body, adjust the location of the bolt sleeve and/or finger notch housing to align the holes. The bolt sleeve may be up to 1/4" inset from the end of the astragal.

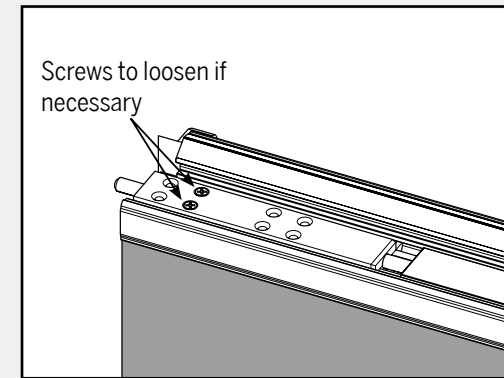


STEP 4: CHECK BOLT OPERATION

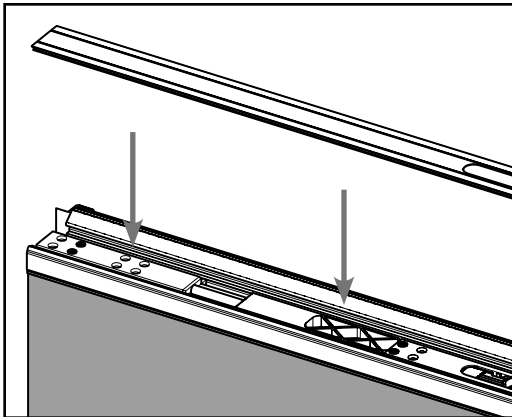


a. To check bolt operation, press down on the finger notch and slide the bolt out towards the end of the astragal. To unlock the bolt, press down and slide back.

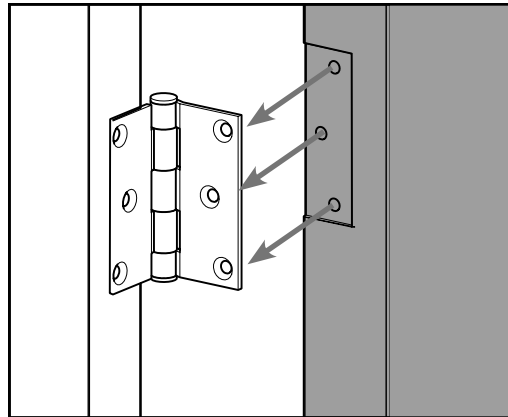
For Upper Bolt Only:
If retracting the bolt is tight, loosen the screws on the upper bolt sleeve.



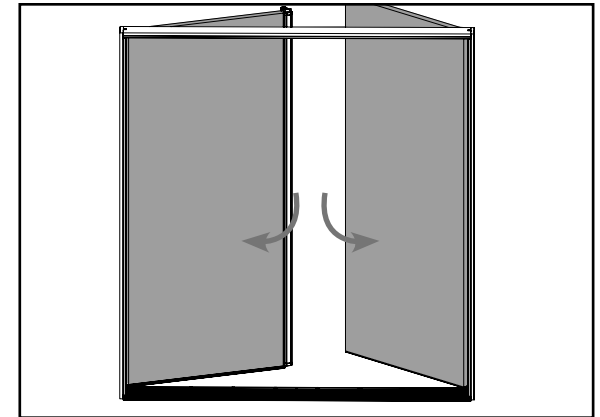
STEP 5: REINSTALL THE DOOR PANEL



a. Replace the trim strip previously removed from the astragal body.



b. Reinstall the inactive door panel by screwing the door panel back to the hinges.



c. Close the inactive door and lock the bolts to ensure the bolts contact the header and sill receivers properly.



8817 West Market Street, Colfax, NC 27235
800.334.2006 Fax: 336.668.4478
www.enduraproducts.com

Rev. Date: 08.18.2017
©2017 Endura Products, Inc.
Innovation protected under patents and patents pending in U.S. and Canada. See www.EnduraPatents.com.
#BD-INST-SBBOLT